

12/22/2023 11:00 AM

z:\projects\plazadoor corp\fbc-21-0640 - fbc submittal - series 7000 aluminum venting\dwgs\gim001 - copy.dwg

GLOBAL IMPACT PRODUCTS, LLC

SERIES 7000 ALUMINUM SINGLE HUNG WINDOW WALL

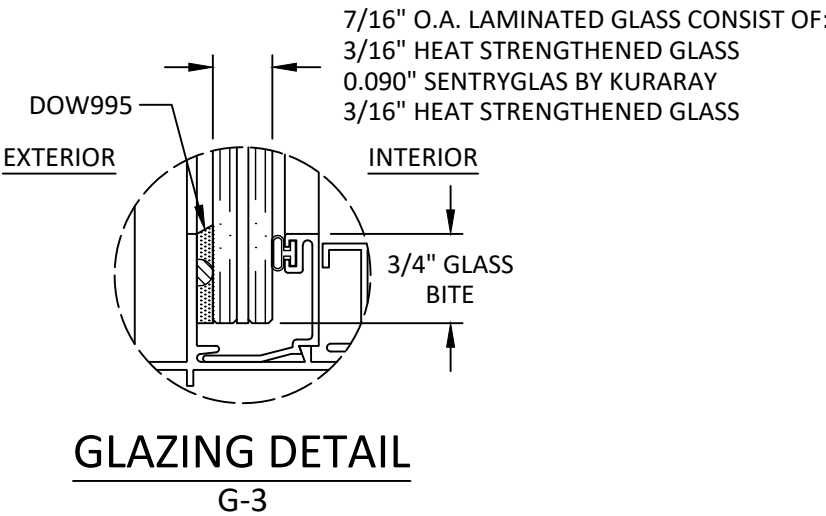
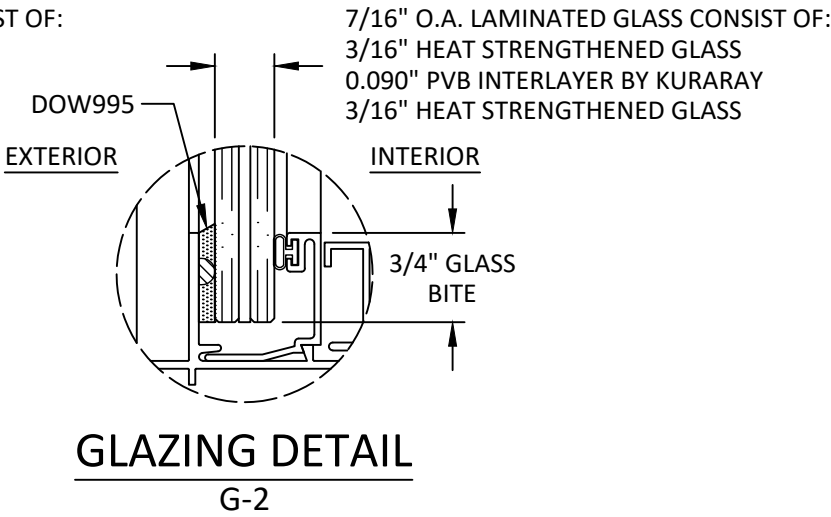
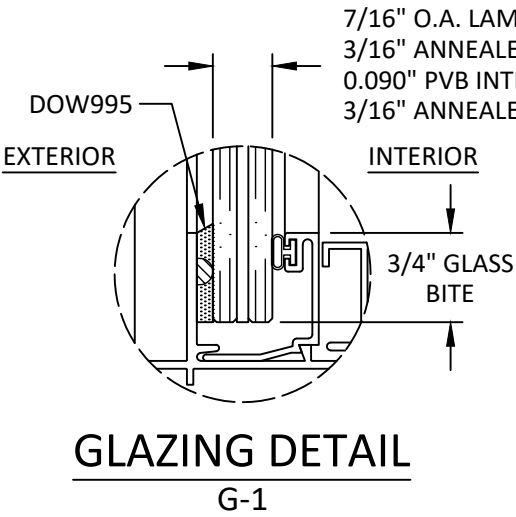
(HVHZ) (IMPACT)

GENERAL NOTES:

1. THE PRODUCT SHOWN HEREIN IS DESIGNED AND MANUFACTURED TO COMPLY WITH THE CURRENT EDITION FLORIDA BUILDING CODE (FBC) INCLUDING HVHZ. ALL PRODUCTS UNDER THE SCOPE OF THIS DOCUMENT HAVE BEEN EVALUATED ACCORDING TO THE FOLLOWING:
 - TAS 201-94
 - TAS 202-94
 - TAS 203-94
2. ADEQUACY OF THE EXISTING STRUCTURAL CONCRETE/MASONRY, 2X AND METAL STUD FRAMING AS A MAIN WIND FORCE RESISTING SYSTEM CAPABLE OF WITHSTANDING AND TRANSFERRING APPLIED PRODUCT LOADS TO THE FOUNDATION IS THE RESPONSIBILITY OF THE ENGINEER OR ARCHITECT OF RECORD FOR THE PROJECT OF INSTALLATION.
3. 1X AND 2X BUCKS (WHEN USED) SHALL BE DESIGNED AND ANCHORED TO PROPERLY TRANSFER ALL LOADS TO THE STRUCTURE. BUCK DESIGN AND INSTALLATION IS THE RESPONSIBILITY OF THE ENGINEER OR ARCHITECT OF RECORD FOR THE PROJECT OF INSTALLATION.
4. INSTALL INDIVIDUAL INSTALLATION ANCHORS WITHIN A TOLERANCE OF $\pm 1/4$ INCH OF THE DEPICTED LOCATION IN THE ANCHOR LAYOUT DETAIL (I.E., WITHOUT CONSIDERATION OF TOLERANCES). TOLERANCES ARE NOT CUMULATIVE FROM ONE INSTALLATION ANCHOR TO THE NEXT.
5. THE INSTALLATION DETAILS DESCRIBED HEREIN ARE GENERIC AND MAY NOT REFLECT ACTUAL CONDITIONS FOR A SPECIFIC SITE. IF SITE CONDITIONS CAUSE INSTALLATION TO DEVIATE FROM THE REQUIREMENTS DETAILED HEREIN, A LICENSED ENGINEER OR ARCHITECT SHALL PREPARE SITE SPECIFIC DOCUMENTS FOR USE WITH THIS DOCUMENT IN HVHZ AREAS.
6. APPROVED IMPACT PROTECTIVE SYSTEM **IS NOT REQUIRED** TO PROTECT THIS PRODUCT IN AREAS REQUIRING IMPACT RESISTANCE.
7. FRAME MATERIAL: 6063-T5 ALUMINUM, 6063-T6 ALUMINUM
8. GLASS MEETS THE REQUIREMENTS OF ASTM E 1300 GLASS CHARTS. SEE SHEET 1 FOR GLAZING DETAILS.

TABLE OF CONTENTS	
SHEET	SHEET DESCRIPTION
1	GENERAL NOTES, DESIGN PRESSURE TABLE AND GLAZING DETAILS
2	ELEVATION AND ANCHOR LAYOUT
3	VERTICAL SECTIONS
4	HORIZONTAL SECTIONS
5	INSTALLATION DETAILS AND NOTES

DESIGN PRESSURE RATING			
GLAZING TYPE	FRAME SIZE	DESIGN PRESSURE	MISSILE RATING
G-1	48" X 120"	+75/-75 PSF	LARGE & SMALL MISSILE IMPACT
G-2	48" X 120"	+80/-95 PSF	
G-3	48" X 120"	+100/-140 PSF	
G-1	53 1/8" X 96"	+59.5/-59.5 PSF	
G-2	53 1/8" X 96"	+63.4/-75.3 PSF	
G-3	53 1/8" X 96"	+79.3/-111 PSF	



- GLAZING NOTES:
1. GLASS TYPE & THICKNESS COMPLIES WITH ASTM E1300 REQUIREMENTS AS WELL AS APPLICABLE SAFETY GLAZING REQUIREMENTS PER THE FBC. TEMPER AND SAFETY GLAZING REQUIREMENTS SHALL BE REVIEWED ON A SITE SPECIFIC BASIS.
 2. SETTING BLOCK DUROMETER HARDNESS OF 70-90 (SHORE A) AS REFERENCED IN FBC CHAPTER 24.
 3. SETTING BLOCKS TO BE LOCATED AT 1/4 SPAN LENGTH FOR GLASS WIDER THAN 36" AS PER FBC CHAPTER 24.
 4. D.L.O. AND DESIGN PRESSURES MAY NOT EXCEED MAX VALUES IN DESIGN PRESSURE TABLES.
 5. GLAZING DETAILS SHOWN ARE TYPICAL OF INSIDE GLAZED CONDITION AT FIXED LITE . VENT IS OUTSIDE GLAZED WITH DETAILS OF SILICONE, GLAZING BEAD AND GASKET MIRRORED.

GLOBAL IMPACT
PRODUCTS, LLC

1963 W MCNAB ROAD
POMPANO BEACH, FL 33069
PH: (561) 346-3649

TITLE: SERIES 7000 ALUMINUM
SINGLE HUNG WINDOW WALL
(HVHZ) (IMPACT)

GENERAL NOTES, DESIGN PRESSURE
TABLE & GLAZING DETAILS

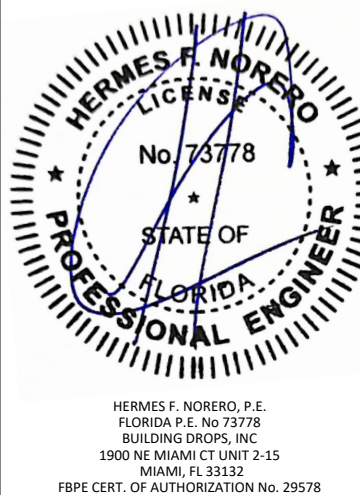
PREPARED BY:

BUILDING DROPS, INC.
1900 NE MIAMI CT UNIT 2-15
MIAMI, FL 33132
PH: (954) 399-8478
FAX: (954) 744-4738
WEB: www.buildingdrops.com

BD
BUILDING DROPS

REMARKS	BY	DATE

THE INSTALLATION DETAILS DESCRIBED HEREIN ARE GENERIC AND MAY NOT REFLECT ACTUAL CONDITIONS FOR A SPECIFIC SITE. IF SITE CONDITIONS CAUSE INSTALLATION TO DEVIATE FROM THE REQUIREMENTS DETAILED HEREIN, A LICENSED ENGINEER OR ARCHITECT SHALL PREPARE SITE SPECIFIC DOCUMENTS FOR USE WITH THIS DOCUMENT.



HERMES F. NORERO, P.E.
FLORIDA P.E. No. 73778
BUILDING DROPS, INC.
1900 NE MIAMI CT UNIT 2-15
MIAMI, FL 33132
FBPE CERT. OF AUTHORIZATION No. 29578

FL #: **FL40318**

DATE: **07.22.21**

DWG. BY: **MS** CHK. BY: **HFN**

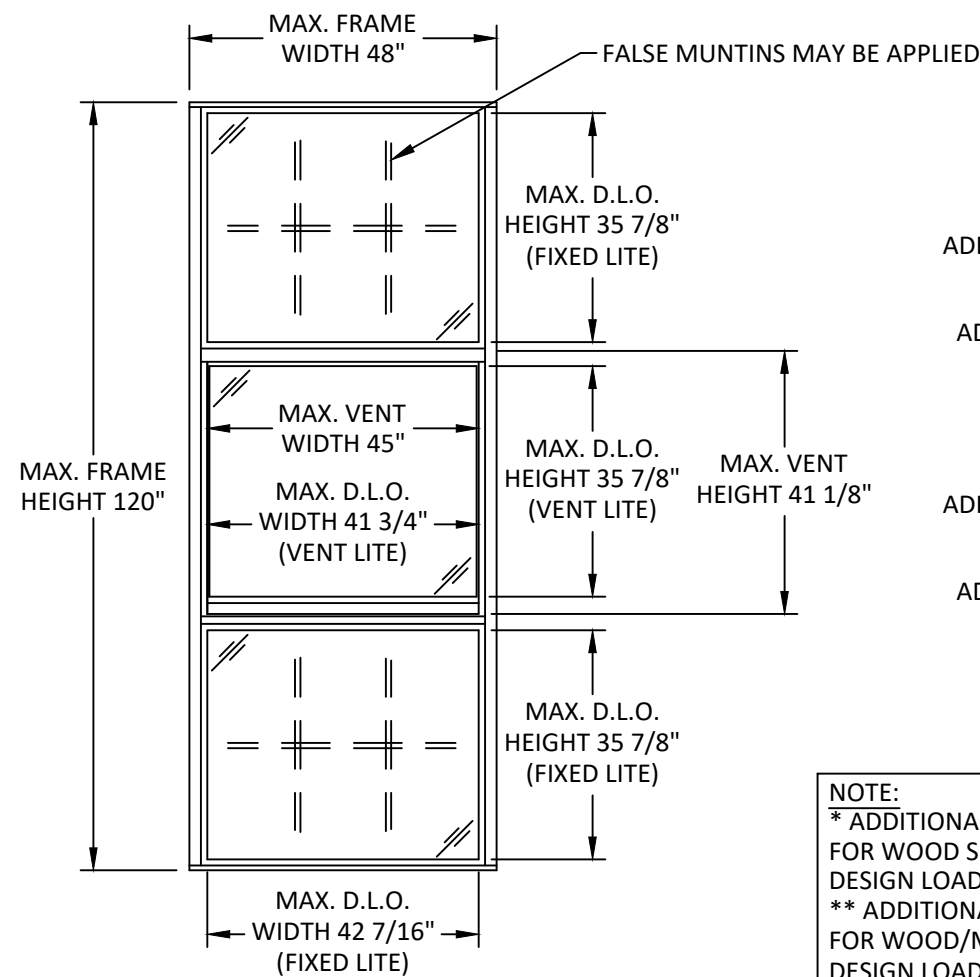
SCALE: **NTS**

DWG. #: **GIM001**

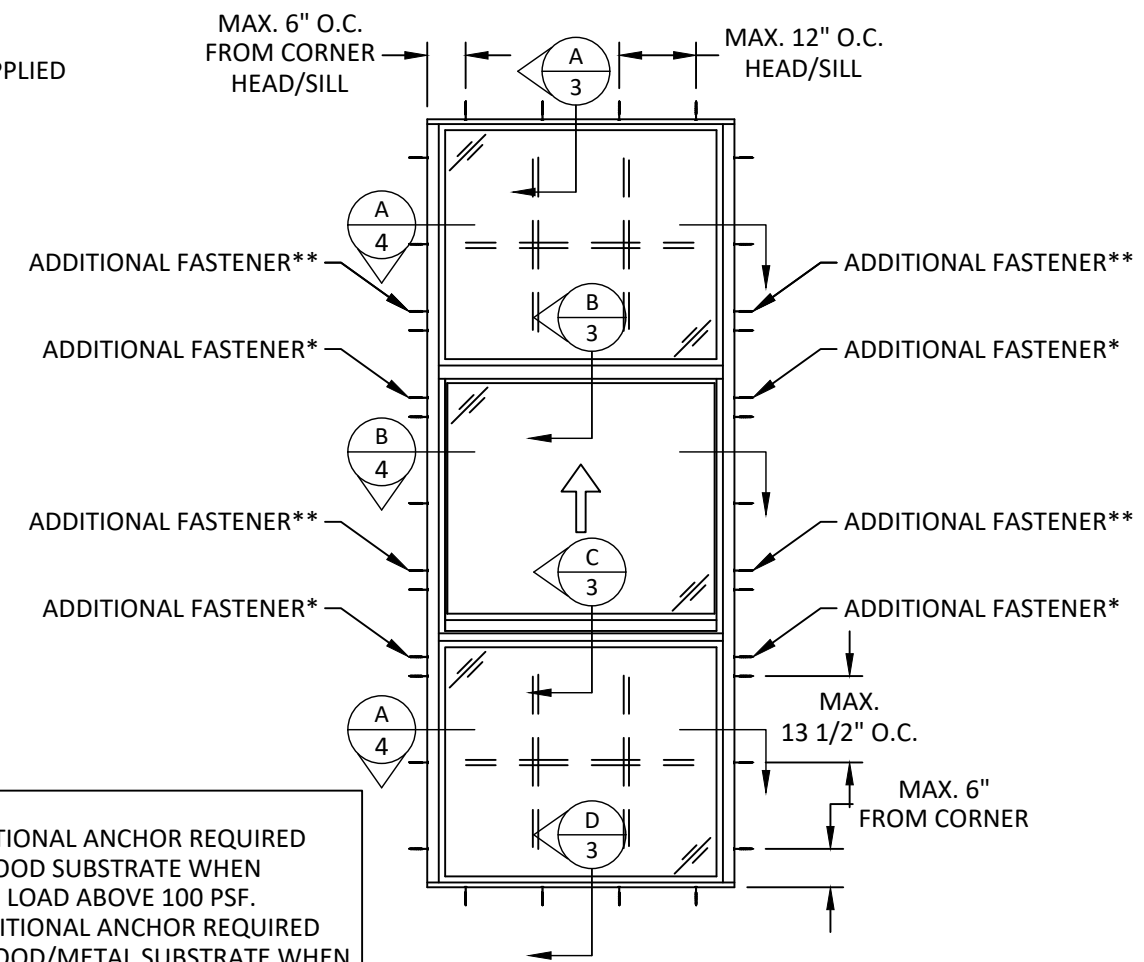
SHEET: **1**

OF 5

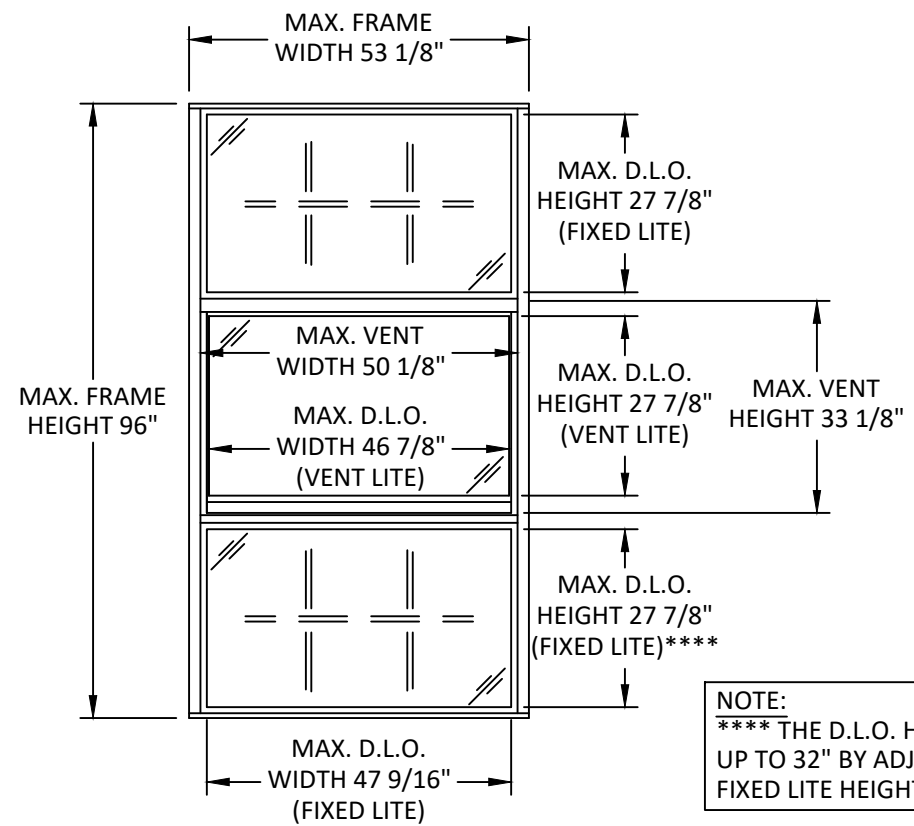
12/22/2023 11:00 AM
z:\projects\plazadoor corp\fbc-21-0640 - fbc submittal - series 7000 aluminum venting.dwg\dwgs\gim001 - copy.dwg



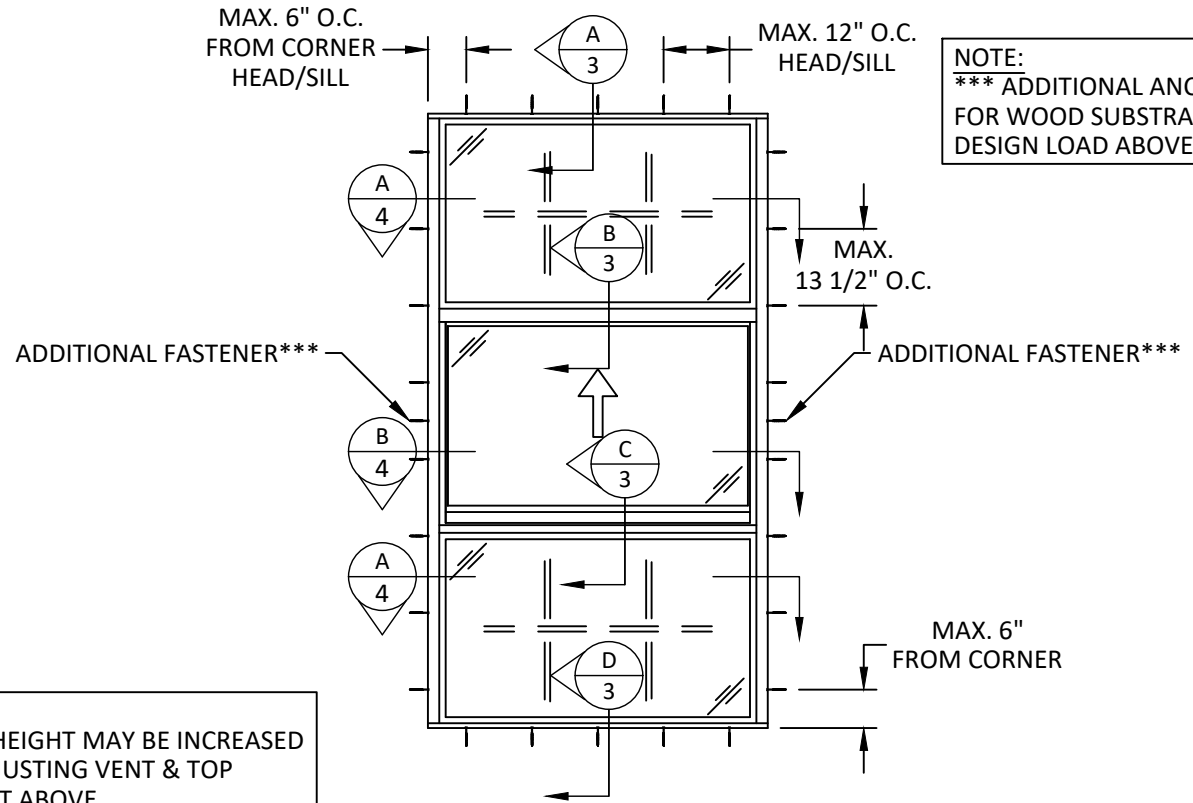
ELEVATION



ANCHOR LAYOUT



ELEVATION



ANCHOR LAYOUT

GLOBAL IMPACT PRODUCTS, LLC

1963 W MCNAB ROAD
POMPANO BEACH, FL 33069
PH: (561) 346-3649

TITLE: SERIES 7000 ALUMINUM
SINGLE HUNG WINDOW WALL
(HVHZ) (IMPACT)

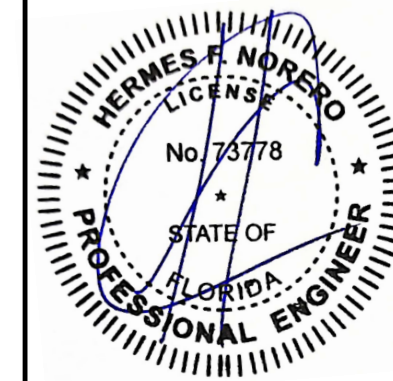
ELEVATION & ANCHOR LAYOUT

PREPARED BY:
BUILDING DROPS, INC.
1900 NE MIAMI CT UNIT 2-15
MIAMI, FL 33132
PH: (954) 399-8478
FAX: (954) 744-4738
WEB: www.buildingdrops.com



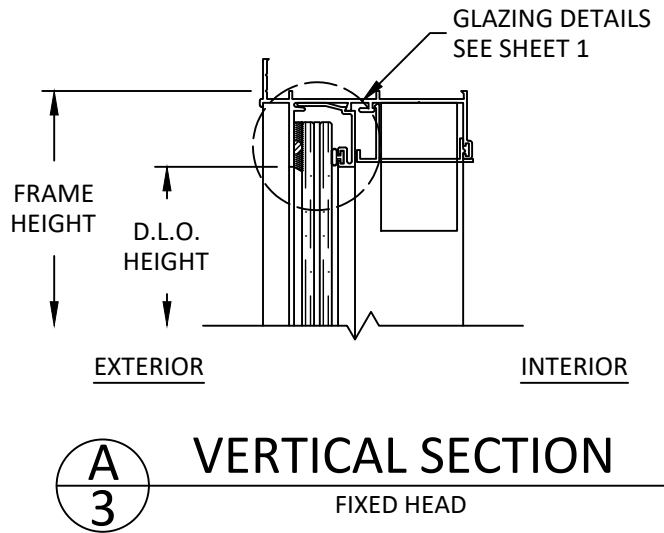
REMARKS	BY	DATE

THE INSTALLATION DETAILS DESCRIBED HEREIN ARE GENERIC AND MAY NOT REFLECT ACTUAL CONDITIONS FOR A SPECIFIC SITE. IF SITE CONDITIONS CAUSE INSTALLATION TO DEVIATE FROM THE REQUIREMENTS DETAILED HEREIN, A LICENSED ENGINEER OR ARCHITECT SHALL PREPARE SITE SPECIFIC DOCUMENTS FOR USE WITH THIS DOCUMENT.

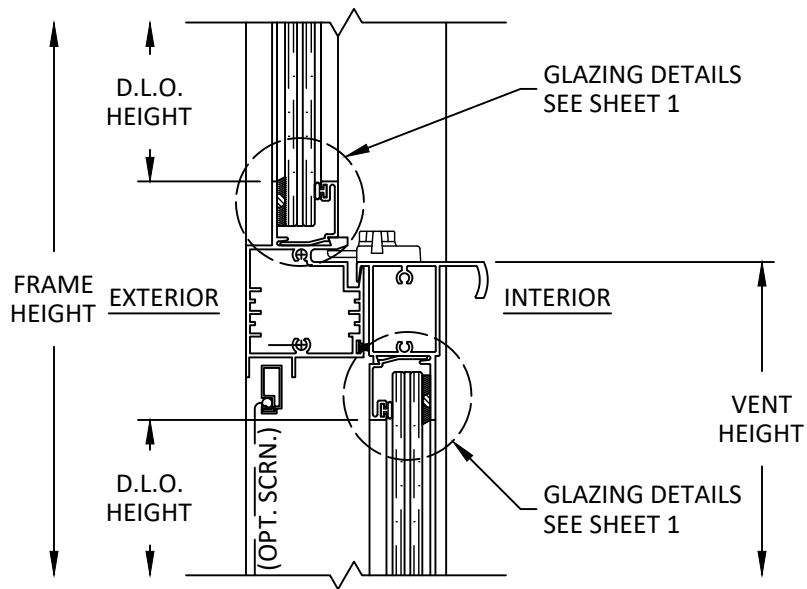


HERMES F. NORERO, P.E.
FLORIDA P.E. No. 73778
BUILDING DROPS, INC
1900 NE MIAMI CT UNIT 2-15
MIAMI, FL 33132
FBPE CERT. OF AUTHORIZATION No. 29578

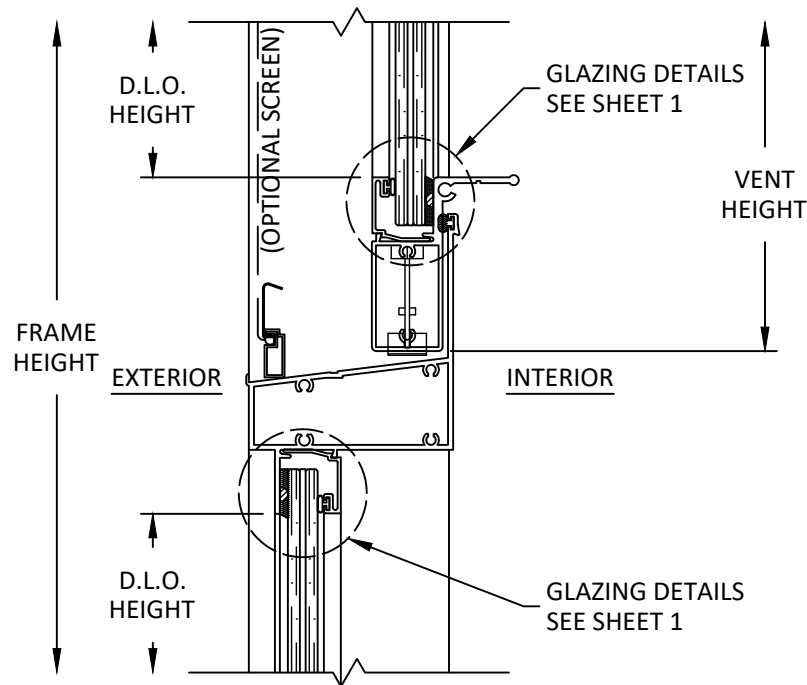
FL #:	FL40318
DATE:	07.22.21
DWG. BY:	MS
CHK. BY:	HFN
SCALE:	NTS
DWG. #:	GIM001
SHEET:	2



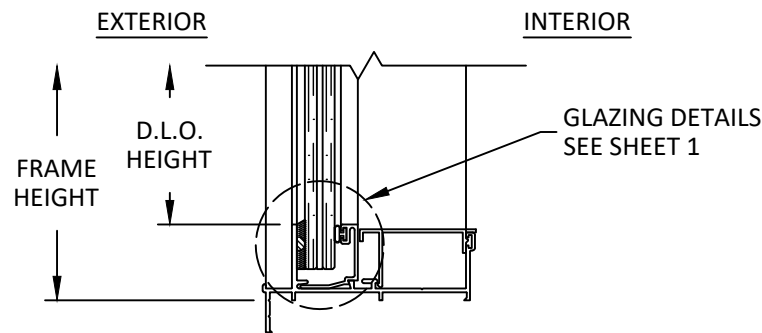
A
3 VERTICAL SECTION
FIXED HEAD



B
3 VERTICAL SECTION
FIXED LITE TO VENT



C
3 VERTICAL SECTION
VENT TO FIXED LITE



D
3 VERTICAL SECTION
FIXED SILL

GLOBAL IMPACT
PRODUCTS, LLC

1963 W MCNAB ROAD
POMPANO BEACH, FL 33069
PH: (561) 346-3649

TITLE: SERIES 7000 ALUMINUM
SINGLE HUNG WINDOW WALL
(HVHZ) (IMPACT)

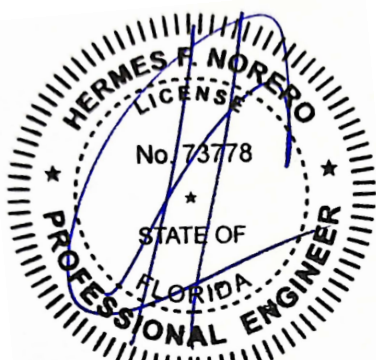
VERTICAL SECTIONS

PREPARED BY:
BUILDING DROPS, INC.
1900 NE MIAMI CT UNIT 2-15
MIAMI, FL 33132
PH: (954)399-8478
FAX: (954)744-4738
WEB: www.buildingdrops.com



REMARKS	BY	DATE

THE INSTALLATION DETAILS DESCRIBED HEREIN ARE GENERIC AND MAY NOT REFLECT ACTUAL CONDITIONS FOR A SPECIFIC SITE. IF SITE CONDITIONS CAUSE INSTALLATION TO DEVIATE FROM THE REQUIREMENTS DETAILED HEREIN, A LICENSED ENGINEER OR ARCHITECT SHALL PREPARE SITE SPECIFIC DOCUMENTS FOR USE WITH THIS DOCUMENT.



HERMES F. NORERO, P.E.
FLORIDA P.E. No. 73778
BUILDING DROPS, INC
1900 NE MIAMI CT UNIT 2-15
MIAMI, FL 33132
FBPE CERT. OF AUTHORIZATION No. 29578

FL #: **FL40318**

DATE: **07.22.21**

DWG. BY:
MS

CHK. BY:
HFN

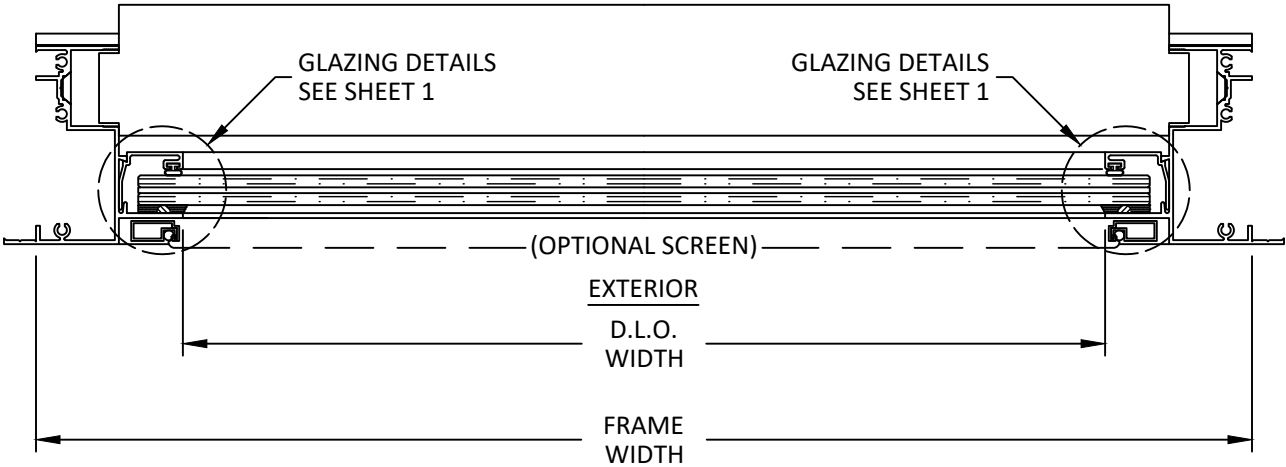
SCALE: **NTS**

DWG. #: **GIM001**

SHEET:

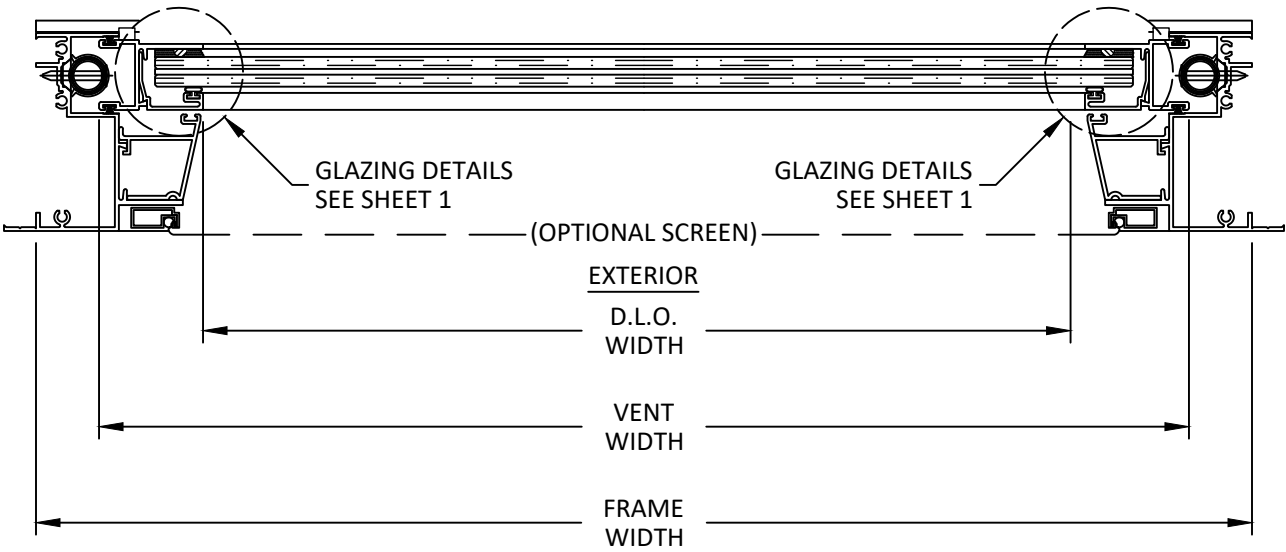
3

INTERIOR



A
4 HORIZONTAL SECTION
FIXED LITE

INTERIOR



B
4 HORIZONTAL SECTION
VENT

GLOBAL IMPACT
PRODUCTS, LLC

1963 W MCNAB ROAD
POMPANO BEACH, FL 33069
PH: (561) 346-3649

TITLE: SERIES 7000 ALUMINUM
SINGLE HUNG WINDOW WALL
(HVHZ) (IMPACT)

HORIZONTAL SECTIONS

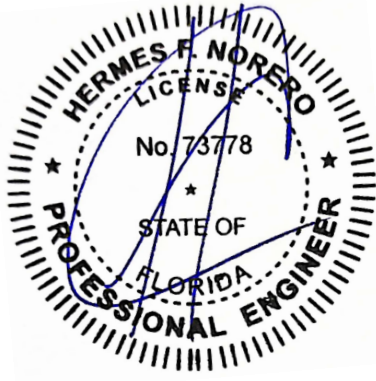
PREPARED BY:



BUILDING DROPS, INC.
1900 NE MIAMI CT UNIT 2-15
MIAMI, FL 33132
PH: (954)399-8478
FAX: (954)744-4738
WEB: www.buildingdrops.com

REMARKS	BY	DATE

THE INSTALLATION DETAILS DESCRIBED HEREIN ARE GENERIC AND MAY NOT REFLECT ACTUAL CONDITIONS FOR A SPECIFIC SITE. IF SITE CONDITIONS CAUSE INSTALLATION TO DEVIATE FROM THE REQUIREMENTS DETAILED HEREIN, A LICENSED ENGINEER OR ARCHITECT SHALL PREPARE SITE SPECIFIC DOCUMENTS FOR USE WITH THIS DOCUMENT.



HERMES F. NORERO, P.E.
FLORIDA P.E. No. 73778
BUILDING DROPS, INC
1900 NE MIAMI CT UNIT 2-15
MIAMI, FL 33132
FBPE CERT. OF AUTHORIZATION No. 29578

FL #: **FL40318**

DATE: **07.22.21**

DWG. BY: MS	CHK. BY: HFN
-----------------------	------------------------

SCALE: **NTS**

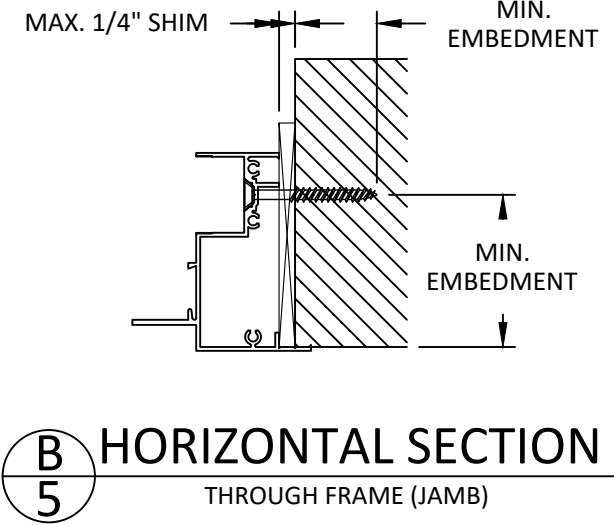
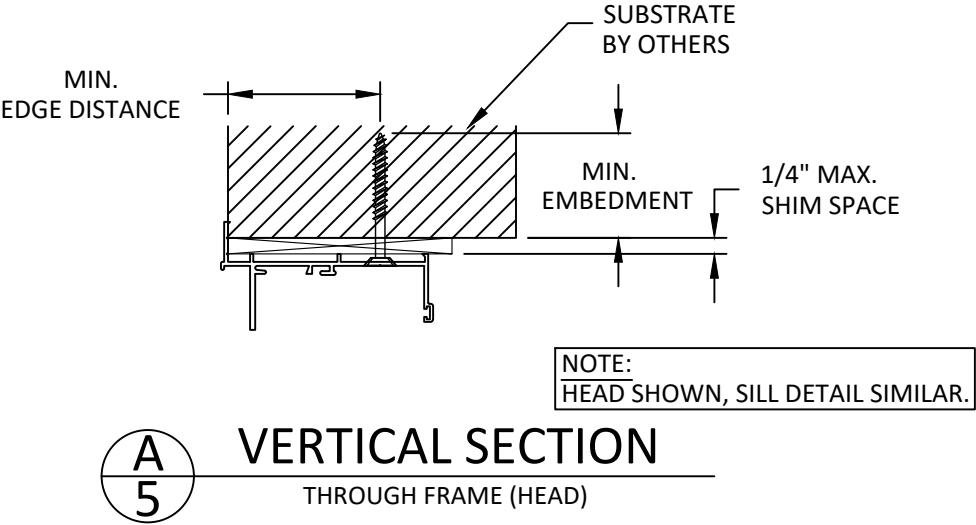
DWG. #: **GIM001**

SHEET:

4

OF 5

12/22/2023 11:00 AM
z:\projects\plazadoor corp\lbc-21-0640 - fbc submittal-series 7000 aluminum venting\dwgs\gim001 - copy.dwg



INSTALLATION NOTES:

- ONE (1) INSTALLATION ANCHOR IS REQUIRED AT EACH ANCHOR LOCATION.
- THE NUMBER OF INSTALLATION ANCHORS DEPICTED IS THE MINIMUM NUMBER OF ANCHORS TO BE USED FOR PRODUCT INSTALLATION OF THE MAXIMUM SIZE LISTED.
- INSTALL INDIVIDUAL INSTALLATION ANCHORS WITHIN A TOLERANCE OF $\pm 1/4$ INCH THE DEPICTED LOCATION & SPACING IN THE ANCHOR LAYOUT DETAILS (I.E., WITHOUT CONSIDERATION OF TOLERANCES). TOLERANCES ARE NOT CUMULATIVE FROM ONE INSTALLATION ANCHOR TO THE NEXT.
- SHIM AS REQUIRED AT EACH INSTALLATION ANCHOR WITH LOAD BEARING SHIM(S). MAXIMUM ALLOWABLE SHIM STACK TO BE 1/4 INCH. SHIM WHERE SPACE OF 1/16 INCH OR GREATER OCCURS. SHIM(S) SHALL BE CONSTRUCTED OF HIGH DENSITY PLASTIC OR BETTER.
- FOR MASONRY OR CONCRETE OPENINGS, A 1X WOOD BUCK MAY BE USED (OPTIONAL) AS LONG AS THE MINIMUM EMBEDMENT AND EDGE DISTANCE REQUIREMENTS ARE STILL MET WITHIN THE CORRESPONDING HOST SUBSTRATE. SEE GENERAL NOTE #3 ON SHEET 1 FOR MORE INFORMATION.
- MINIMUM EMBEDMENT AND EDGE DISTANCE EXCLUDE WALL FINISHES, INCLUDING BUT NOT LIMITED TO STUCCO, FOAM, BRICK VENEER, AND SIDING.
- INSTALLATION ANCHORS AND ASSOCIATED HARDWARE MUST BE MADE OF CORROSION RESISTANT MATERIAL OR HAVE A CORROSION RESISTANT COATING.
- FOR HOLLOW BLOCK AND GROUT FILLED BLOCK, DO NOT INSTALL INSTALLATION ANCHORS INTO MORTAR JOINTS. EDGE DISTANCE IS MEASURED FROM FREE EDGE OF BLOCK OR EDGE OF MORTAR JOINT INTO FACE SHELL OF BLOCK.
- INSTALLATION ANCHORS SHALL BE INSTALLED IN ACCORDANCE WITH ANCHOR MANUFACTURER'S INSTALLATION INSTRUCTIONS, AND ANCHORS SHALL NOT BE USED IN SUBSTRATES WITH STRENGTHS LESS THAN THE MINIMUM STRENGTH SPECIFIED BY THE ANCHOR MANUFACTURER.

ANCHOR SCHEDULE				
METHOD	SUBSTRATE	ANCHOR TYPE	MIN. EMBEDMENT	MIN. EDGE DISTANCE
THROUGH FRAME	WOOD: MIN. S.G. = 0.55	1/4" ELCO ULTRACON	1.5"	1"
	METAL: STEEL MIN. 1/8" THK. (MIN. Fy = 36 ksi) ALUM. MIN. 1/8" THK. (MIN. 6063-T5)	1/4" SMS OR SELF-DRILLING SCREW	3 THREADS MIN PENETRATION BEYOND METAL	0.75"
	CONCRETE: MIN. f'c = 3000 psi	1/4" ELCO ULTRACON	1.25"	2.5"
	MASONRY: CMU per ASTM C90 MIN. 2000 PSI	1/4" ELCO ULTRACON	1.25"	2.5"

GLOBAL IMPACT
PRODUCTS, LLC

1963 W MCNAB ROAD
POMPANO BEACH, FL 33069
PH: (561) 346-3649

TITLE: SERIES 7000 ALUMINUM
SINGLE HUNG WINDOW WALL
(HVHZ) (IMPACT)

INSTALLATION DETAILS AND NOTES

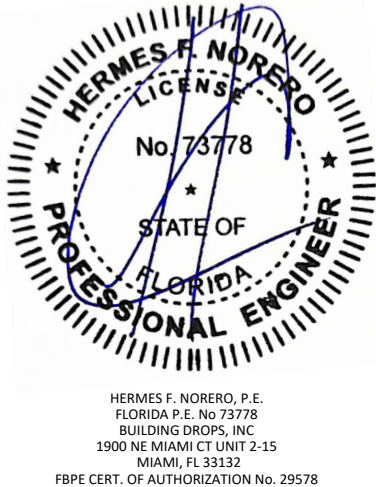
PREPARED BY:

BUILDING DROPS, INC.
1900 NE MIAMI CT UNIT 2-15
MIAMI, FL 33132
PH: (954)399-8478
FAX: (954)744-4738
WEB: www.buildingdrops.com



REMARKS	BY	DATE

THE INSTALLATION DETAILS DESCRIBED HEREIN ARE GENERIC AND MAY NOT REFLECT ACTUAL CONDITIONS FOR A SPECIFIC SITE. IF SITE CONDITIONS CAUSE INSTALLATION TO DEVIATE FROM THE REQUIREMENTS DETAILED HEREIN, A LICENSED ENGINEER OR ARCHITECT SHALL PREPARE SITE SPECIFIC DOCUMENTS FOR USE WITH THIS DOCUMENT.



FL #: **FL40318**

DATE: **07.22.21**

DWG. BY: **MS** CHK. BY: **HFN**

SCALE: **NTS**

DWG. #: **GIM001**

SHEET: **5**