

# GLOBAL INDUSTRIES AND MFG., INC.

## SERIES 7000 ALUMINUM WINDOW WALL

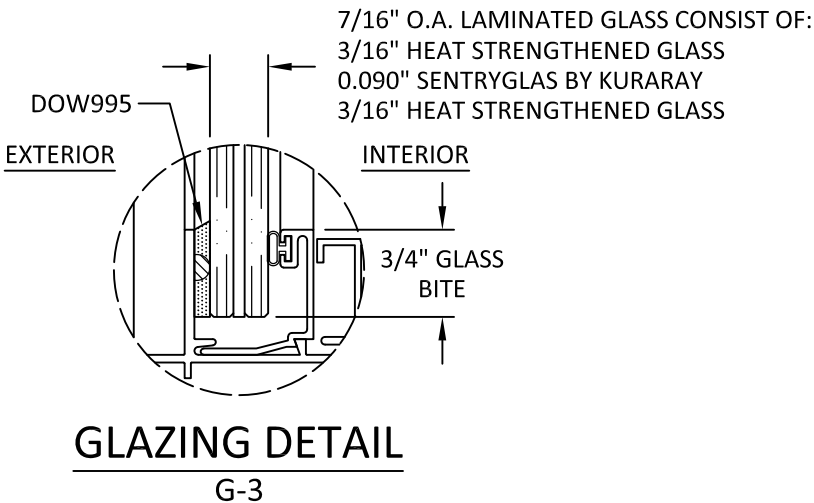
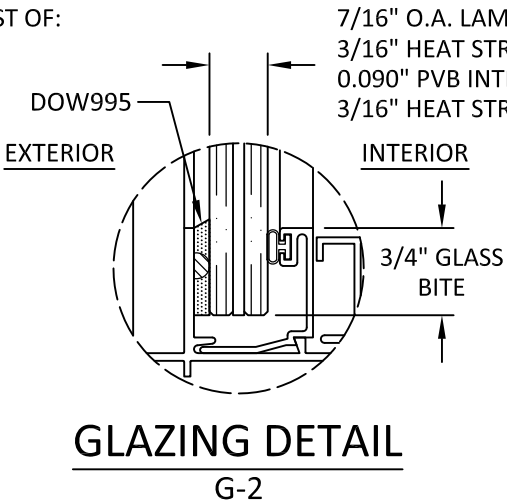
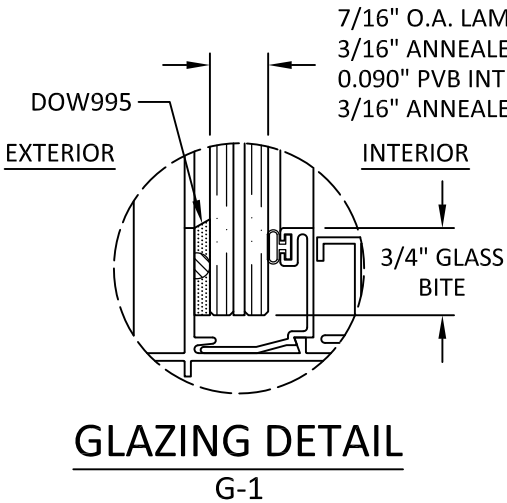
### (HVHZ) (IMPACT)

#### GENERAL NOTES:

- THE PRODUCT SHOWN HEREIN IS DESIGNED AND MANUFACTURED TO COMPLY WITH THE CURRENT EDITION FLORIDA BUILDING CODE (FBC) INCLUDING HVHZ. ALL PRODUCTS UNDER THE SCOPE OF THIS DOCUMENT HAVE BEEN EVALUATED ACCORDING TO THE FOLLOWING:
  - TAS 201-94
  - TAS 202-94
  - TAS 203-94
- ADEQUACY OF THE EXISTING STRUCTURAL CONCRETE/MASONRY, 2X AND METAL STUD FRAMING AS A MAIN WIND FORCE RESISTING SYSTEM CAPABLE OF WITHSTANDING AND TRANSFERRING APPLIED PRODUCT LOADS TO THE FOUNDATION IS THE RESPONSIBILITY OF THE ENGINEER OR ARCHITECT OF RECORD FOR THE PROJECT OF INSTALLATION.
- 1X AND 2X BUCKS (WHEN USED) SHALL BE DESIGNED AND ANCHORED TO PROPERLY TRANSFER ALL LOADS TO THE STRUCTURE. BUCK DESIGN AND INSTALLATION IS THE RESPONSIBILITY OF THE ENGINEER OR ARCHITECT OF RECORD FOR THE PROJECT OF INSTALLATION.
- INSTALL INDIVIDUAL INSTALLATION ANCHORS WITHIN A TOLERANCE OF  $\pm 1/4$  INCH OF THE DEPICTED LOCATION IN THE ANCHOR LAYOUT DETAIL (I.E., WITHOUT CONSIDERATION OF TOLERANCES). TOLERANCES ARE NOT CUMULATIVE FROM ONE INSTALLATION ANCHOR TO THE NEXT.
- THE INSTALLATION DETAILS DESCRIBED HEREIN ARE GENERIC AND MAY NOT REFLECT ACTUAL CONDITIONS FOR A SPECIFIC SITE. IF SITE CONDITIONS CAUSE INSTALLATION TO DEVIATE FROM THE REQUIREMENTS DETAILED HEREIN, A LICENSED ENGINEER OR ARCHITECT SHALL PREPARE SITE SPECIFIC DOCUMENTS FOR USE WITH THIS DOCUMENT IN HVHZ AREAS.
- APPROVED IMPACT PROTECTIVE SYSTEM **IS NOT REQUIRED** TO PROTECT THIS PRODUCT IN AREAS REQUIRING IMPACT RESISTANCE.
- FRAME MATERIAL: 6063-T5 ALUMINUM, 6063-T6 ALUMINUM
- GLASS MEET THE REQUIREMENTS OF ASTM E 1300 GLASS CHARTS. SEE SHEET 1 FOR GLAZING DETAILS.

TABLE OF CONTENTS	
SHEET	SHEET DESCRIPTION
1	GENERAL NOTES, DESIGN PRESSURE TABLE AND GLAZING DETAILS
2	ELEVATION AND ANCHOR LAYOUT
3	VERTICAL SECTIONS
4	HORIZONTAL SECTIONS
5	INSTALLATION DETAILS AND NOTES

DESIGN PRESSURE RATING			
GLAZING TYPE	FRAME SIZE	DESIGN PRESSURE	MISSILE RATING
G-1	48" X 120"	+75/-75 PSF	LARGE & SMALL MISSILE IMPACT
G-2	48" X 120"	+80/-95 PSF	
G-3	48" X 120"	+100/-140 PSF	
G-1	53 1/8" X 96"	+59.5/-59.5 PSF	
G-2	53 1/8" X 96"	+63.4/-75.3 PSF	
G-3	53 1/8" X 96"	+79.3/-111 PSF	



#### GLAZING NOTES:

- GLASS TYPE & THICKNESS SHALL COMPLY WITH ASTM E1300 REQUIREMENTS AS WELL AS APPLICABLE SAFETY GLAZING REQUIREMENTS PER THE FBC. TEMPER AND SAFETY GLAZING REQUIREMENTS SHALL BE REVIEWED ON A SITE SPECIFIC BASIS.
- SETTING BLOCK DUROMETER HARDNESS OF 70-90 (SHORE A) AS REFERENCED IN FBC CHAPTER 24.
- SETTING BLOCKS TO BE LOCATED AT 1/4 SPAN LENGTH FOR GLASS WIDER THAN 36" AS PER FBC CHAPTER 24.
- D.L.O. AND DESIGN PRESSURES MAY NOT EXCEED MAX VALUES IN DESIGN PRESSURE TABLES.
- GLAZING DETAILS SHOWN ARE TYPICAL OF INSIDE GLAZED CONDITION AT FIXED LITE . VENT IS OUTSIDE GLAZED WITH DETAILS OF SILICONE, GLAZING BEAD AND GASKET MIRRORED.

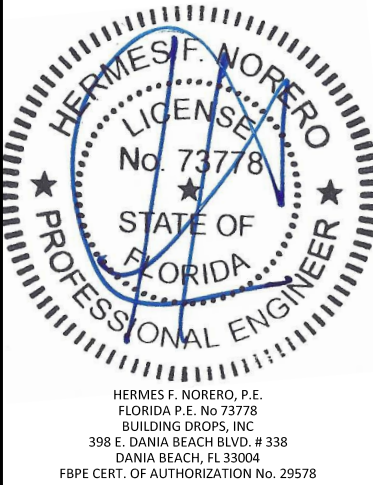
GLOBAL INDUSTRIES  
AND MFG., INC.

1963 W MCNAB ROAD  
POMPANO BEACH, FL 33069  
PH: (561) 346-3649

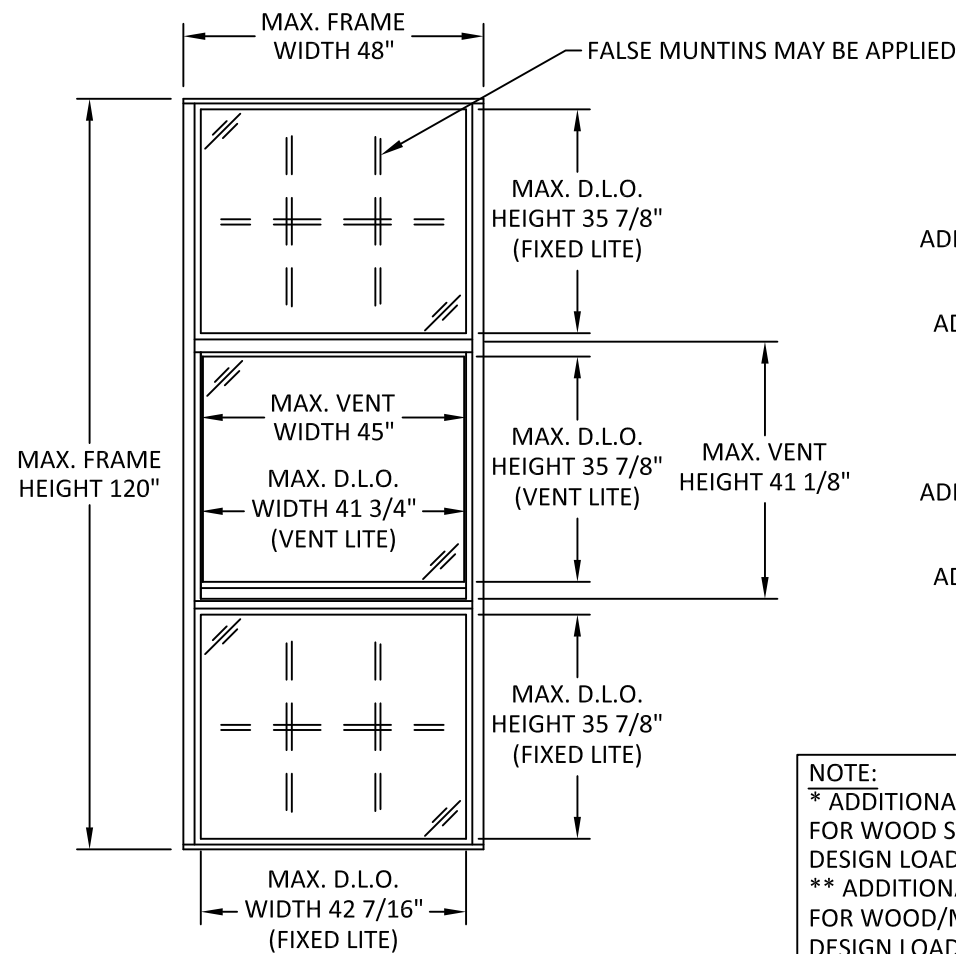
TITLE: SERIES 7000 ALUMINUM WINDOW WALL (HVHZ) (IMPACT)  
GENERAL NOTES, DESIGN PRESSURE TABLE & GLAZING DETAILS  
PREPARED BY: BUILDING DROPS, INC.  
398 E. DANIA BEACH BLVD., STE. 338  
DANIA BEACH, FL 33004  
PH: (954) 399-8478  
FAX: (954) 744-4738  
WEB: www.buildingdrops.com

REMARKS	BY	DATE

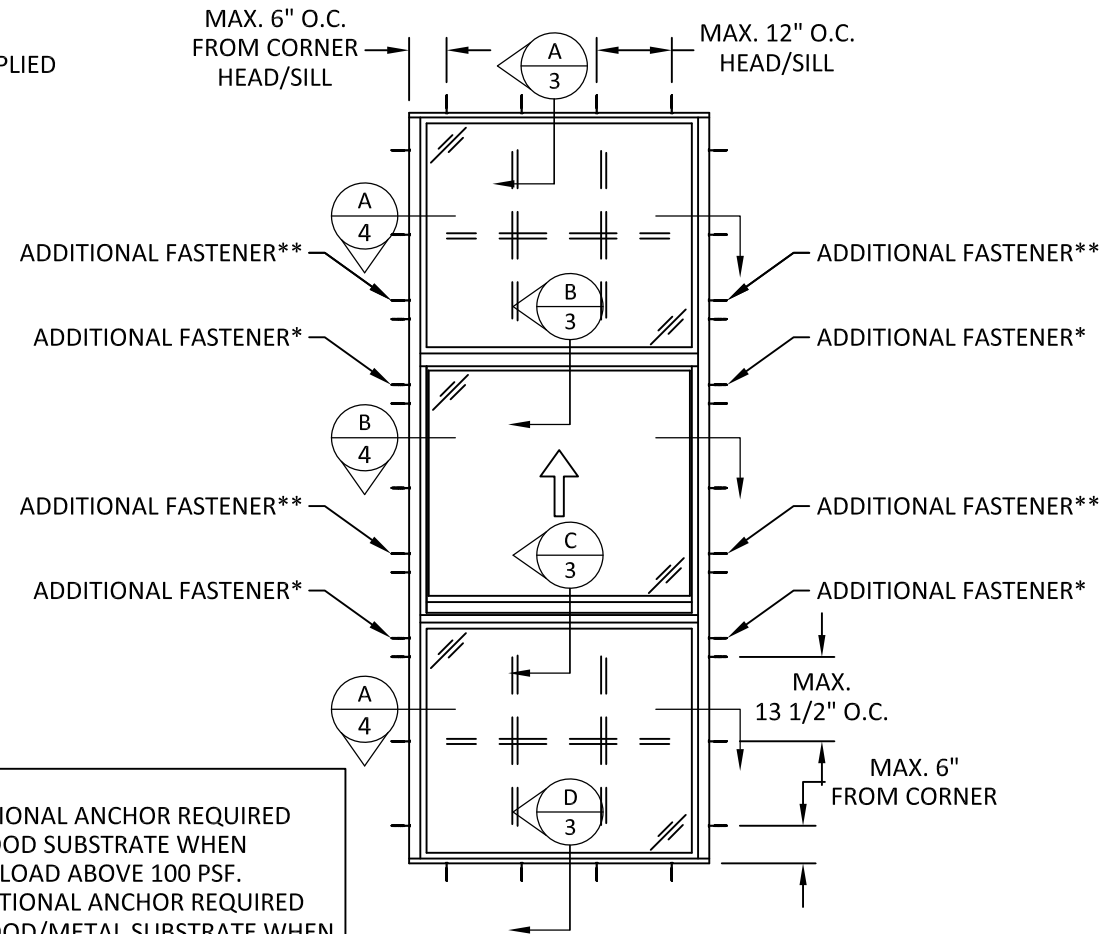
THE INSTALLATION DETAILS DESCRIBED HEREIN ARE GENERIC AND MAY NOT REFLECT ACTUAL CONDITIONS FOR A SPECIFIC SITE. IF SITE CONDITIONS CAUSE INSTALLATION TO DEVIATE FROM THE REQUIREMENTS DETAILED HEREIN, A LICENSED ENGINEER OR ARCHITECT SHALL PREPARE SITE SPECIFIC DOCUMENTS FOR USE WITH THIS DOCUMENT.



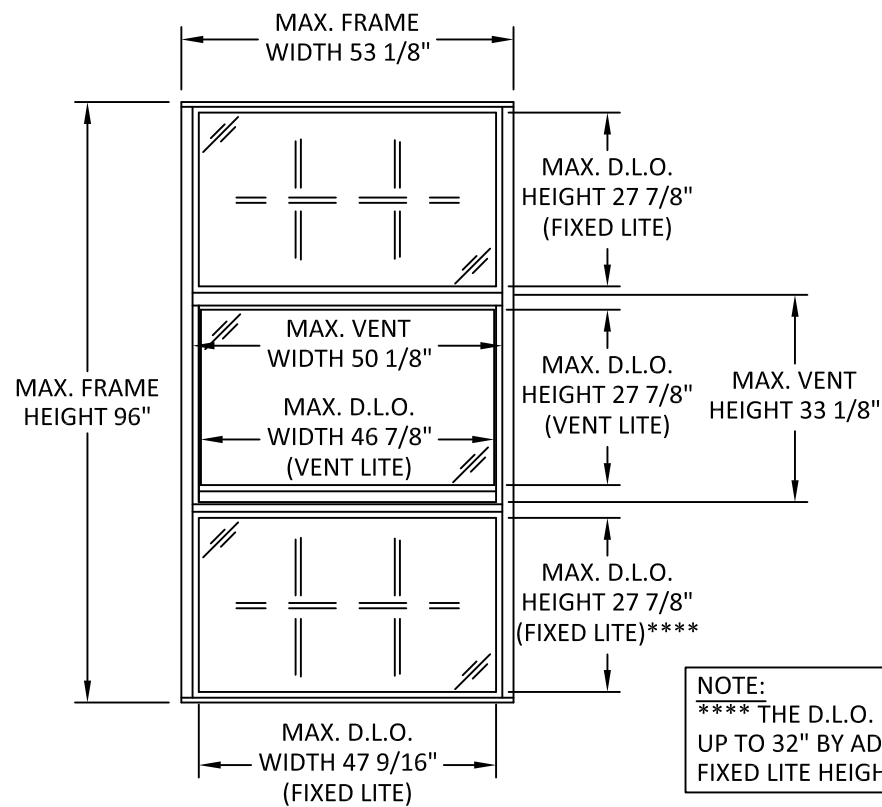
FL #: **FL40318**  
DATE: **07.22.21**  
DWG. BY: **MS** CHK. BY: **HFN**  
SCALE: **NTS**  
DWG. #: **GIM001**  
SHEET:



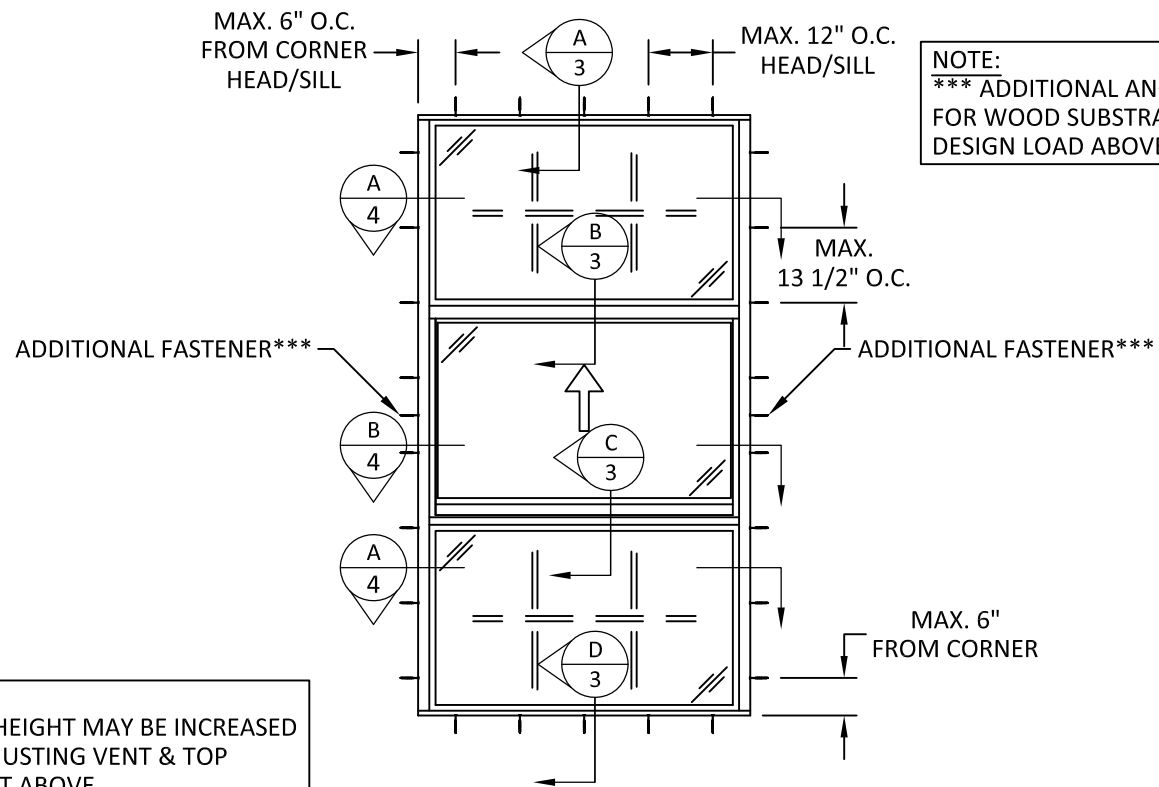
ELEVATION



ANCHOR LAYOUT



ELEVATION



ANCHOR LAYOUT

GLOBAL INDUSTRIES  
AND MFG., INC.

1963 W MCNAB ROAD  
POMPANO BEACH, FL 33069  
PH: (561) 346-3649

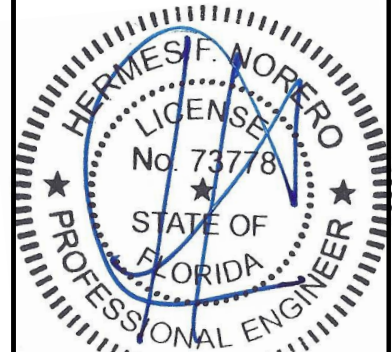
TITLE: SERIES 7000 ALUMINUM  
WINDOW WALL  
(HVHZ) (IMPACT)  
ELEVATION & ANCHOR LAYOUT

PREPARED BY:  
BUILDING DROPS, INC.  
398 E. DANIA BEACH BLVD., STE. 338  
DANIA BEACH, FL 33004  
PH: (954) 399-8478  
FAX: (954) 744-4738  
WEB: www.buildingdrops.com



REMARKS	BY	DATE

THE INSTALLATION DETAILS DESCRIBED HEREIN ARE GENERIC  
AND MAY NOT REFLECT ACTUAL CONDITIONS FOR A SPECIFIC  
SITE. IF SITE CONDITIONS CAUSE INSTALLATION TO DEVIATE  
FROM THE REQUIREMENTS DETAILED HEREIN, A LICENSED  
ENGINEER OR ARCHITECT SHALL PREPARE SITE SPECIFIC  
DOCUMENTS FOR USE WITH THIS DOCUMENT.



HERMES F. NORERO, P.E.  
FLORIDA P.E. No. 73778  
BUILDING DROPS, INC.  
398 E. DANIA BEACH BLVD. # 338  
DANIA BEACH, FL 33004  
FBPE CERT. OF AUTHORIZATION No. 29578

FL #: **FL40318**

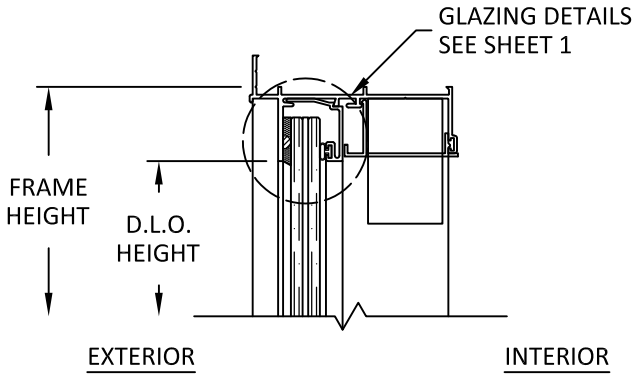
DATE: **07.22.21**

DWG. BY: **MS** CHK. BY: **HFN**

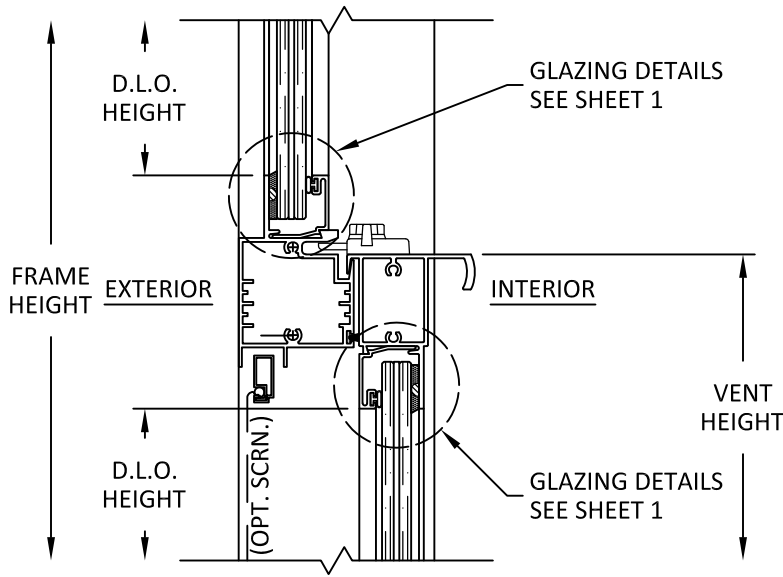
SCALE: **NTS**

DWG. #: **GIM001**

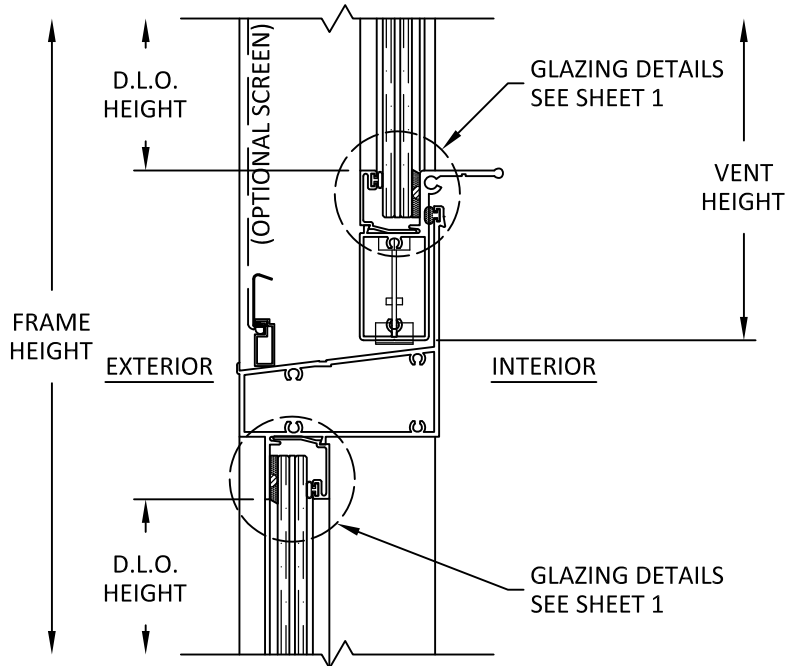
SHEET:



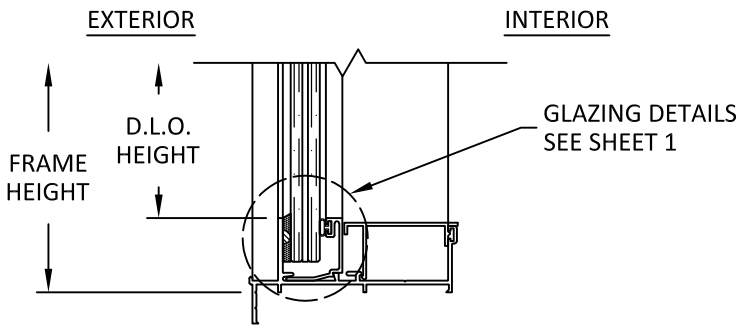
**A**  
**3** VERTICAL SECTION  
FIXED HEAD



**B**  
**3** VERTICAL SECTION  
FIXED LITE TO VENT



**C**  
**3** VERTICAL SECTION  
VENT TO FIXED LITE



**D**  
**3** VERTICAL SECTION  
FIXED SILL

GLOBAL INDUSTRIES  
AND MFG., INC.

1963 W MCNAB ROAD  
POMPANO BEACH, FL 33069  
PH: (561) 346-3649

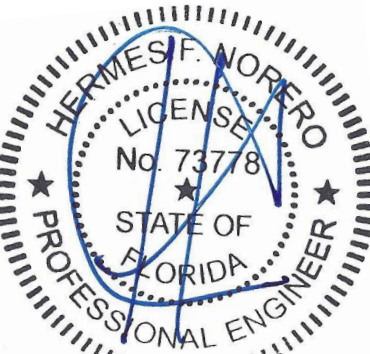
TITLE: SERIES 7000 ALUMINUM  
WINDOW WALL  
(HVHZ) (IMPACT)  
VERTICAL SECTIONS

PREPARED BY: BUILDING DROPS, INC.  
398 E. DANIA BEACH BLVD., STE. 338  
DANIA BEACH, FL 33004  
PH: (954) 399-8478  
FAX: (954) 744-4738  
WEB: www.buildingdrops.com



REMARKS	BY	DATE

THE INSTALLATION DETAILS DESCRIBED HEREIN ARE GENERIC  
AND MAY NOT REFLECT ACTUAL CONDITIONS FOR A SPECIFIC  
SITE. IF SITE CONDITIONS CAUSE INSTALLATION TO DEVIATE  
FROM THE REQUIREMENTS DETAILED HEREIN, A LICENSED  
ENGINEER OR ARCHITECT SHALL PREPARE SITE SPECIFIC  
DOCUMENTS FOR USE WITH THIS DOCUMENT.

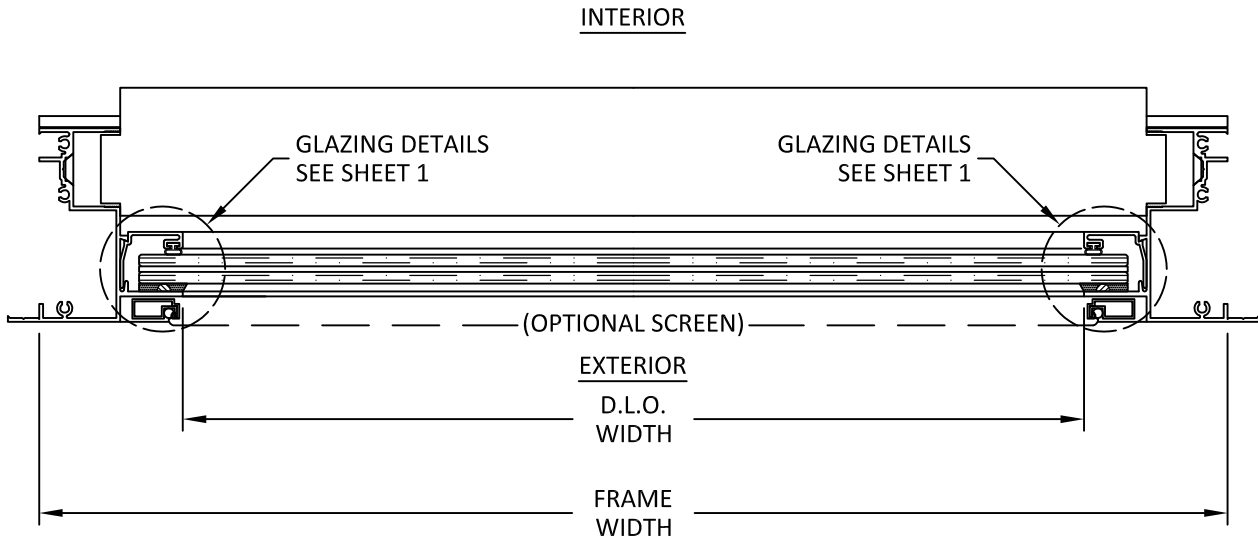


HERMES F. NORERO, P.E.  
FLORIDA P.E. No. 73778  
BUILDING DROPS, INC.  
398 E. DANIA BEACH BLVD. # 338  
DANIA BEACH, FL 33004  
FBPE CERT. OF AUTHORIZATION No. 29578

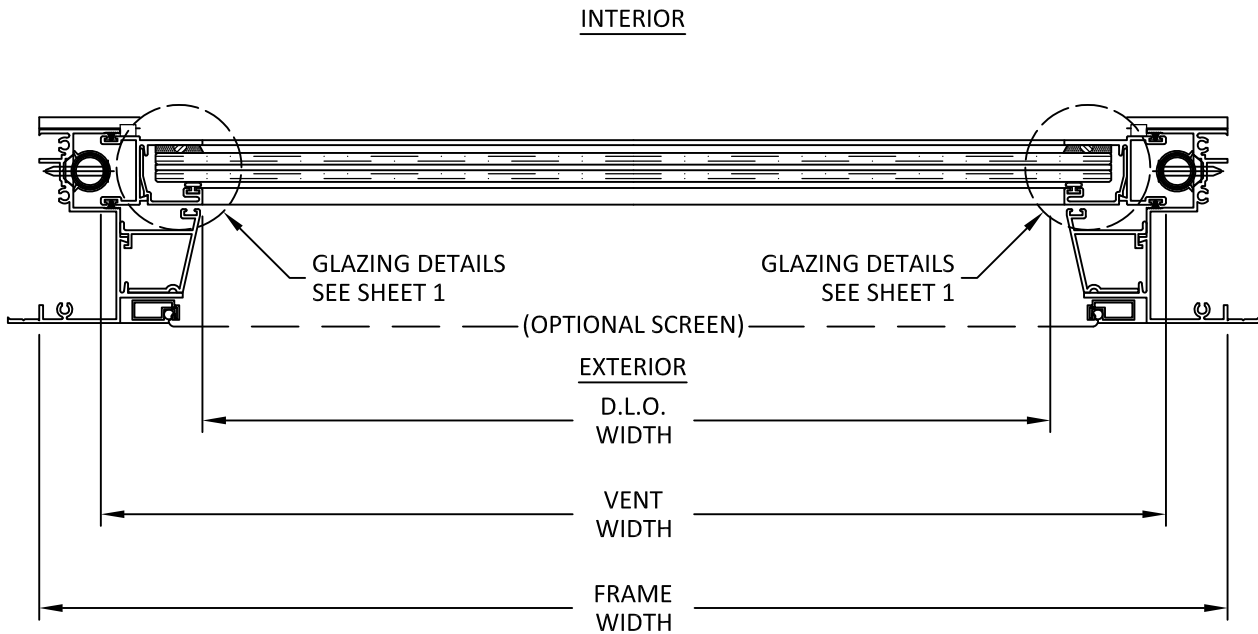
FL #:	FL40318
DATE:	07.22.21
DWG. BY:	CHK. BY:
MS	HFN
SCALE:	NTS
DWG. #:	GIM001

SHEET:

3



**A**  
**4** HORIZONTAL SECTION  
FIXED LITE



**B**  
**4** HORIZONTAL SECTION  
VENT

GLOBAL INDUSTRIES  
AND MFG., INC.

1963 W MCNAB ROAD  
POMPANO BEACH, FL 33069  
PH: (561) 346-3649

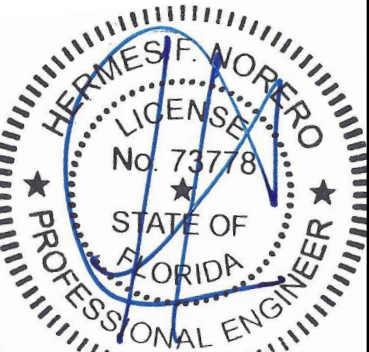
TITLE: SERIES 7000 ALUMINUM  
WINDOW WALL  
(HVHZ) (IMPACT)  
HORIZONTAL SECTIONS

PREPARED BY:  
BUILDING DROPS, INC.  
398 E. DANIA BEACH BLVD., STE. 338  
DANIA BEACH, FL 33004  
PH: (954)399-8478  
FAX: (954)744-4738  
WEB: www.buildingdrops.com



REMARKS	BY	DATE

THE INSTALLATION DETAILS DESCRIBED HEREIN ARE GENERIC  
AND MAY NOT REFLECT ACTUAL CONDITIONS FOR A SPECIFIC  
SITE. IF SITE CONDITIONS CAUSE INSTALLATION TO DEVIATE  
FROM THE REQUIREMENTS DETAILED HEREIN, A LICENSED  
ENGINEER OR ARCHITECT SHALL PREPARE SITE SPECIFIC  
DOCUMENTS FOR USE WITH THIS DOCUMENT.



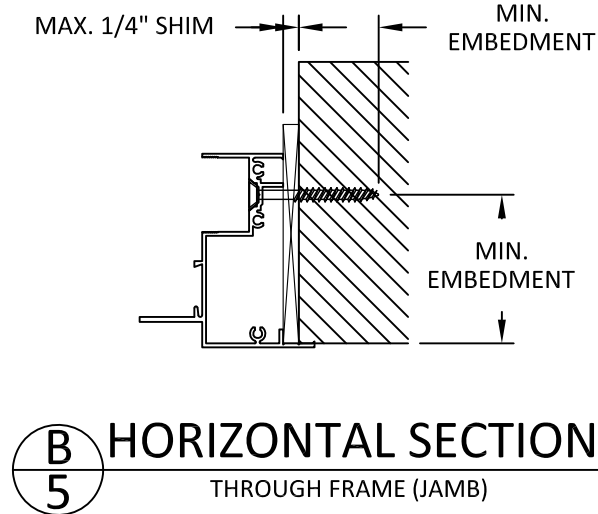
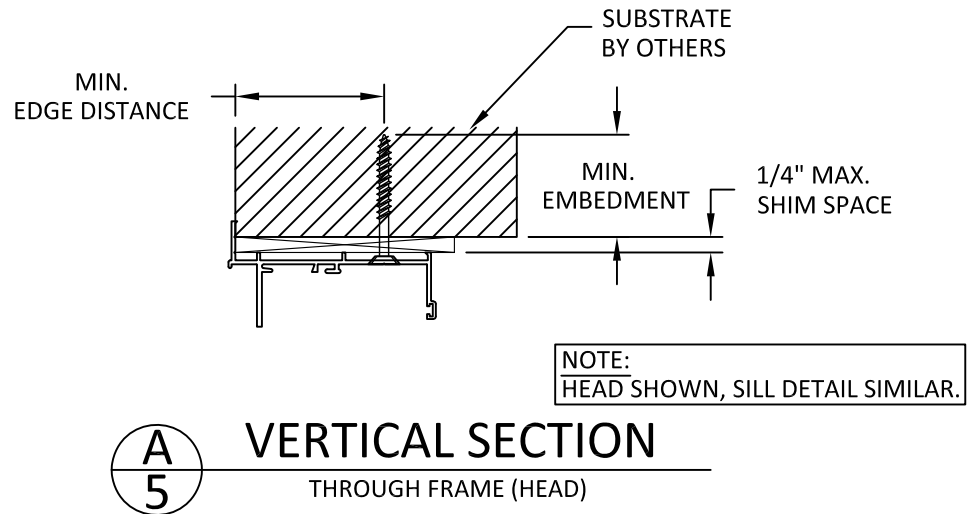
HERMES F. NORERO, P.E.  
FLORIDA P.E. No 73778  
BUILDING DROPS, INC  
398 E. DANIA BEACH BLVD. # 338  
DANIA BEACH, FL 33004  
FBPE CERT. OF AUTHORIZATION No. 29578

FL #:	FL40318
DATE:	07.22.21
DWG. BY:	CHK. BY:
MS	HFN
SCALE:	NTS
DWG. #:	GIM001
SHEET:	4



12/13/2021 6:33 PM

s:\projects\plazadoor corp\fbc-21-0640 - fbc submittal-series 7000 aluminum venting.dwg's\gim001.dwg



INSTALLATION NOTES:

- ONE (1) INSTALLATION ANCHOR IS REQUIRED AT EACH ANCHOR LOCATION.
- THE NUMBER OF INSTALLATION ANCHORS DEPICTED IS THE MINIMUM NUMBER OF ANCHORS TO BE USED FOR PRODUCT INSTALLATION OF THE MAXIMUM SIZE LISTED.
- INSTALL INDIVIDUAL INSTALLATION ANCHORS WITHIN A TOLERANCE OF  $\pm 1/4$  INCH THE DEPICTED LOCATION & SPACING IN THE ANCHOR LAYOUT DETAILS (I.E., WITHOUT CONSIDERATION OF TOLERANCES). TOLERANCES ARE NOT CUMULATIVE FROM ONE INSTALLATION ANCHOR TO THE NEXT.
- SHIM AS REQUIRED AT EACH INSTALLATION ANCHOR WITH LOAD BEARING SHIM(S). MAXIMUM ALLOWABLE SHIM STACK TO BE 1/4 INCH. SHIM WHERE SPACE OF 1/16 INCH OR GREATER OCCURS. SHIM(S) SHALL BE CONSTRUCTED OF HIGH DENSITY PLASTIC OR BETTER.
- FOR MASONRY OR CONCRETE OPENINGS, A 1X WOOD BUCK MAY BE USED (OPTIONAL) AS LONG AS THE MINIMUM EMBEDMENT AND EDGE DISTANCE REQUIREMENTS ARE STILL MET WITHIN THE CORRESPONDING HOST SUBSTRATE. SEE GENERAL NOTE #3 ON SHEET 1 FOR MORE INFORMATION.
- MINIMUM EMBEDMENT AND EDGE DISTANCE EXCLUDE WALL FINISHES, INCLUDING BUT NOT LIMITED TO STUCCO, FOAM, BRICK VENEER, AND SIDING.
- INSTALLATION ANCHORS AND ASSOCIATED HARDWARE MUST BE MADE OF CORROSION RESISTANT MATERIAL OR HAVE A CORROSION RESISTANT COATING.
- FOR HOLLOW BLOCK AND GROUT FILLED BLOCK, DO NOT INSTALL INSTALLATION ANCHORS INTO MORTAR JOINTS. EDGE DISTANCE IS MEASURED FROM FREE EDGE OF BLOCK OR EDGE OF MORTAR JOINT INTO FACE SHELL OF BLOCK.
- INSTALLATION ANCHORS SHALL BE INSTALLED IN ACCORDANCE WITH ANCHOR MANUFACTURER'S INSTALLATION INSTRUCTIONS, AND ANCHORS SHALL NOT BE USED IN SUBSTRATES WITH STRENGTHS LESS THAN THE MINIMUM STRENGTH SPECIFIED BY THE ANCHOR MANUFACTURER.

ANCHOR SCHEDULE				
METHOD	SUBSTRATE	ANCHOR TYPE	MIN. EMBEDMENT	MIN. EDGE DISTANCE
THROUGH FRAME	WOOD: MIN. S.G. = 0.55	1/4" ELCO ULTRACON	1.5"	1"
	METAL: STEEL MIN. 1/8" THK. (MIN. Fy = 36 ksi) ALUM. MIN. 1/8" THK. (MIN. 6063-T5)	1/4" SMS OR SELF-DRILLING SCREW	3 THREADS MIN PENETRATION BEYOND METAL	0.75"
	CONCRETE: MIN. f'c = 3000 psi	1/4" ELCO ULTRACON	1.25"	2.5"
	MASONRY: CMU per ASTM C90 MIN. 2000 PSI	1/4" ELCO ULTRACON	1.25"	2.5"

GLOBAL INDUSTRIES  
AND MFG., INC.

1963 W MCNAB ROAD  
POMPANO BEACH, FL 33069  
PH: (561) 346-3649

TITLE:  
SERIES 7000 ALUMINUM  
WINDOW WALL  
(HVHZ) (IMPACT)

INSTALLATION DETAILS AND NOTES

PREPARED BY:

B

D

BUILDING DROPS

BUILDING DROPS, INC.  
398 E. DANIA BEACH BLVD., STE. 338  
DANIA BEACH, FL 33004  
PH: (954)399-8478  
FAX: (954)744-4738  
WEB: www.buildingdrops.com

REMARKS	BY	DATE

THE INSTALLATION DETAILS DESCRIBED HEREIN ARE GENERIC AND MAY NOT REFLECT ACTUAL CONDITIONS FOR A SPECIFIC SITE. IF SITE CONDITIONS CAUSE INSTALLATION TO DEVIATE FROM THE REQUIREMENTS DETAILED HEREIN, A LICENSED ENGINEER OR ARCHITECT SHALL PREPARE SITE SPECIFIC DOCUMENTS FOR USE WITH THIS DOCUMENT.

H

M

E

S

F

.

N

O

R

E

R

O

LICENSEE

No. 73778

STATE OF FLORIDA

PROFESSIONAL ENGINEER

HERMES F. NORERO, P.E.  
FLORIDA P.E. No 73778  
BUILDING DROPS, INC.  
398 E. DANIA BEACH BLVD. # 338  
DANIA BEACH, FL 33004  
FBPE CERT. OF AUTHORIZATION No. 29578

FL #:  
**FL40318**

DATE:  
**07.22.21**

DWG. BY:  
**MS**

CHK. BY:  
**HFN**

SCALE:  
**NTS**

DWG. #:  
**GIM001**

SHEET:  
**5**

OF 5