

c:\users\msun\building drops - common\projects\global products\fb-24-0457 - fbc submittal - series 120 - 180 aluminum window wall system\dwgs\gip011.dwg 8/26/2024 12:26 PM

GLOBAL IMPACT PRODUCTS, LLC

SERIES 7600 ALUMINUM WINDOW WALL SYSTEM

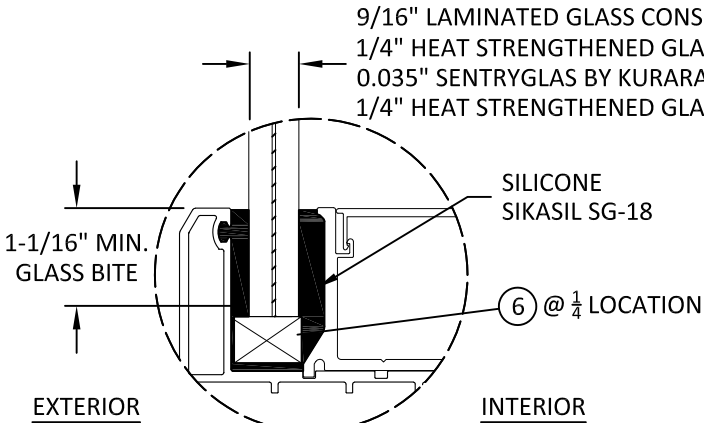
(HVHZ) (IMPACT)

GENERAL NOTES:

- THE PRODUCT SHOWN HEREIN IS DESIGNED AND MANUFACTURED TO COMPLY WITH THE CURRENT EDITION FLORIDA BUILDING CODE (FBC) **INCLUDING** HVHZ. ALL PRODUCTS UNDER THE SCOPE OF THIS DOCUMENT HAVE BEEN EVALUATED ACCORDING TO THE FOLLOWING:
 - AAMA 501-15
 - ANSI Z97.1-14
 - TAS 201-94
 - TAS 202-94
 - TAS 203-94
- ADEQUACY OF THE EXISTING STRUCTURAL CONCRETE/MASONRY, 2X WOOD AND METAL STUD FRAMING AS A MAIN WIND FORCE RESISTING SYSTEM CAPABLE OF WITHSTANDING AND TRANSFERRING APPLIED PRODUCT LOADS TO THE FOUNDATION IS THE RESPONSIBILITY OF THE ENGINEER OR ARCHITECT OF RECORD FOR THE PROJECT OF INSTALLATION.
- 1X AND 2X BUCKS (WHEN USED) SHALL BE DESIGNED AND ANCHORED TO PROPERLY TRANSFER ALL LOADS TO THE STRUCTURE. BUCK DESIGN AND INSTALLATION IS THE RESPONSIBILITY OF THE ENGINEER OR ARCHITECT OF RECORD FOR THE PROJECT OF INSTALLATION.
- THE INSTALLATION DETAILS DESCRIBED HEREIN ARE GENERIC AND MAY NOT REFLECT ACTUAL CONDITIONS FOR A SPECIFIC SITE. IF SITE CONDITIONS CAUSE INSTALLATION TO DEVIATE FROM THE REQUIREMENTS DETAILED HEREIN, A LICENSED ENGINEER OR ARCHITECT SHALL PREPARE SITE SPECIFIC DOCUMENTS FOR USE WITH THIS DOCUMENT.
- APPROVED IMPACT PROTECTIVE SYSTEM **IS NOT REQUIRED** TO PROTECT THIS PRODUCT IN AREAS REQUIRING IMPACT RESISTANCE.
- MATERIAL: ALUMINUM 6063-T5/6063-T6.
- GLASS MEETS THE REQUIREMENTS OF ASTM E 1300 GLASS CHARTS. SEE SHEET 1 FOR GLAZING DETAILS.

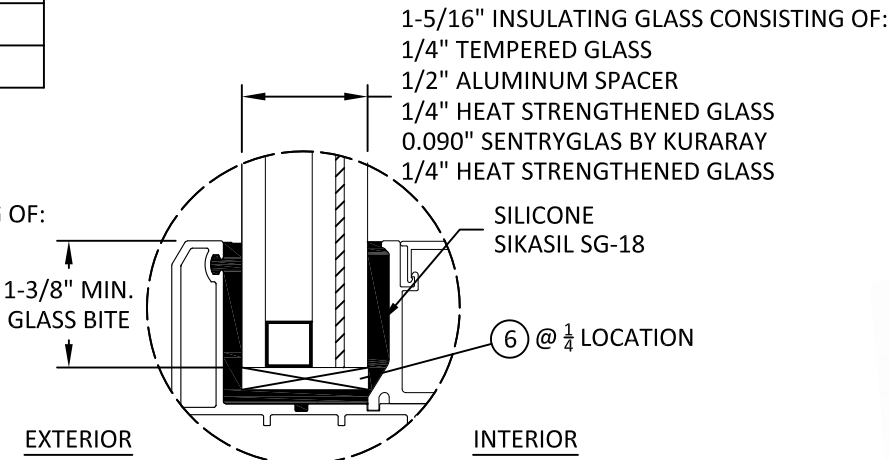
TABLE OF CONTENTS	
SHEET	SHEET DESCRIPTION
1	GENERAL NOTES AND GLAZING DETAILS
2	TYPICAL ELEVATIONS AND DESIGN PRESSURE TABLE
3	ANCHOR LAYOUTS
4	VERTICAL SECTIONS
5	HORIZONTAL SECTIONS
6	INSTALLATION DETAILS, NOTES AND ANCHOR SCHEDULE
7	ANCHOR PRESSURE TABLE
8	BILL OF MATERIALS AND COMPONENTS
9	CORNER DETAILS

DESIGN PRESSURE RATING		
FRAME SIZE	DESIGN PRESSURE	MISSILE RATING
SEE SHEET 2		LARGE & SMALL MISSILE IMPACT

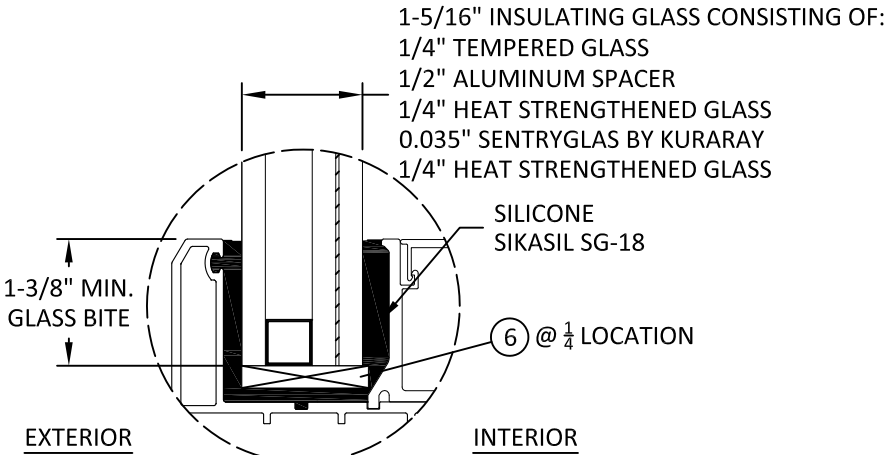


GLAZING DETAIL B
SMALL MISSILE IMPACT

- GLAZING NOTES:
- GLASS TYPE & THICKNESS COMPLIES WITH ASTM E1300 REQUIREMENTS. TEMPER AND SAFETY GLAZING REQUIREMENTS SHALL BE REVIEWED ON A SITE SPECIFIC BASIS.
 - SETTING BLOCK DUROMETER HARDNESS OF 70-90 (SHORE A) AS REFERENCED IN FBC CHAPTER 24.
 - SETTING BLOCKS TO BE LOCATED AT 1/4 SPAN LENGTH FOR GLASS WIDER THAN 36" AS PER FBC CHAPTER 24.
 - D.L.O. AND DESIGN PRESSURES MAY NOT EXCEED MAX VALUES IN SHEET 2.



GLAZING DETAIL A
LARGE MISSILE IMPACT



GLAZING DETAIL C
SMALL MISSILE IMPACT

GLOBAL IMPACT
PRODUCTS, LLC

1963 WEST MCNAB RD,
POMPANO BEACH, FL 33069

TITLE:
SERIES 7600 ALUMINUM WINDOW
WALL SYSTEM (HVHZ) (IMPACT)
GENERAL NOTES & GLAZING DETAILS

PREPARED BY:
BUILDING DROPS, INC.
1900 NE MIAMI COURT, SUITE 2-15
MIAMI, FL 33132
PH: (954)399-8478
FAX: (954)744-4738
WEB: www.buildingdrops.com


BUILDING DROPS

REMARKS	BY	DATE

THE INSTALLATION DETAILS DESCRIBED HEREIN ARE GENERIC AND MAY NOT REFLECT ACTUAL CONDITIONS FOR A SPECIFIC SITE. IF SITE CONDITIONS CAUSE INSTALLATION TO DEVIATE FROM THE REQUIREMENTS DETAILED HEREIN, A LICENSED ENGINEER OR ARCHITECT SHALL PREPARE SITE SPECIFIC DOCUMENTS FOR USE WITH THIS DOCUMENT.



HERMES F. NORERO, P.E.
FLORIDA P.E. No. 73778
BUILDING DROPS, INC.
1900 NE MIAMI COURT, SUITE 2-15
MIAMI, FL 33132
FBPE CERT. OF AUTHORIZATION No. 29578

FL #:
FL46977

DATE:
08.16.2024

DWG. BY:
MS

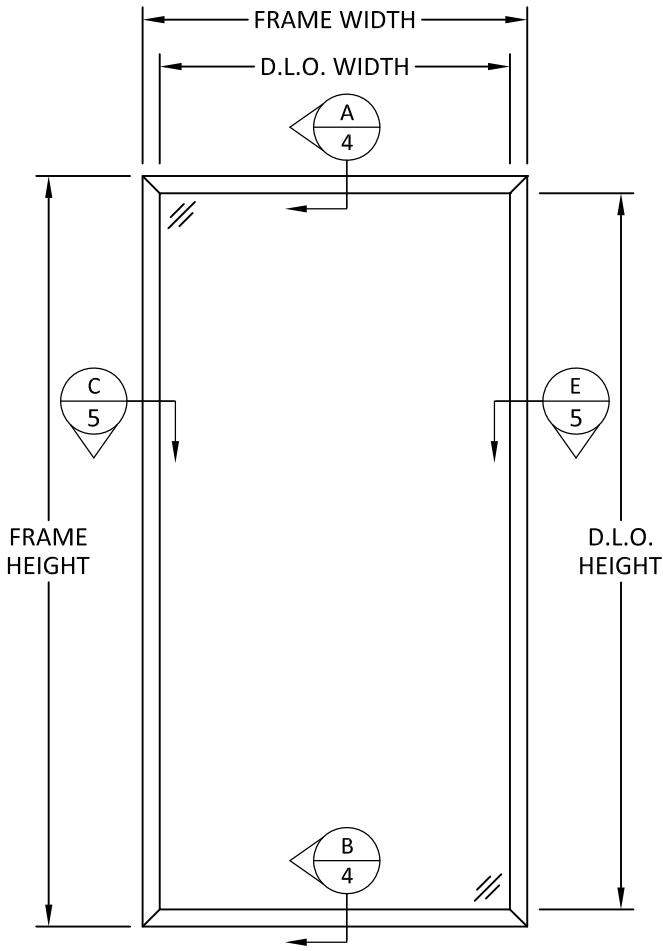
CHK. BY:
HFN

SCALE:
NTS

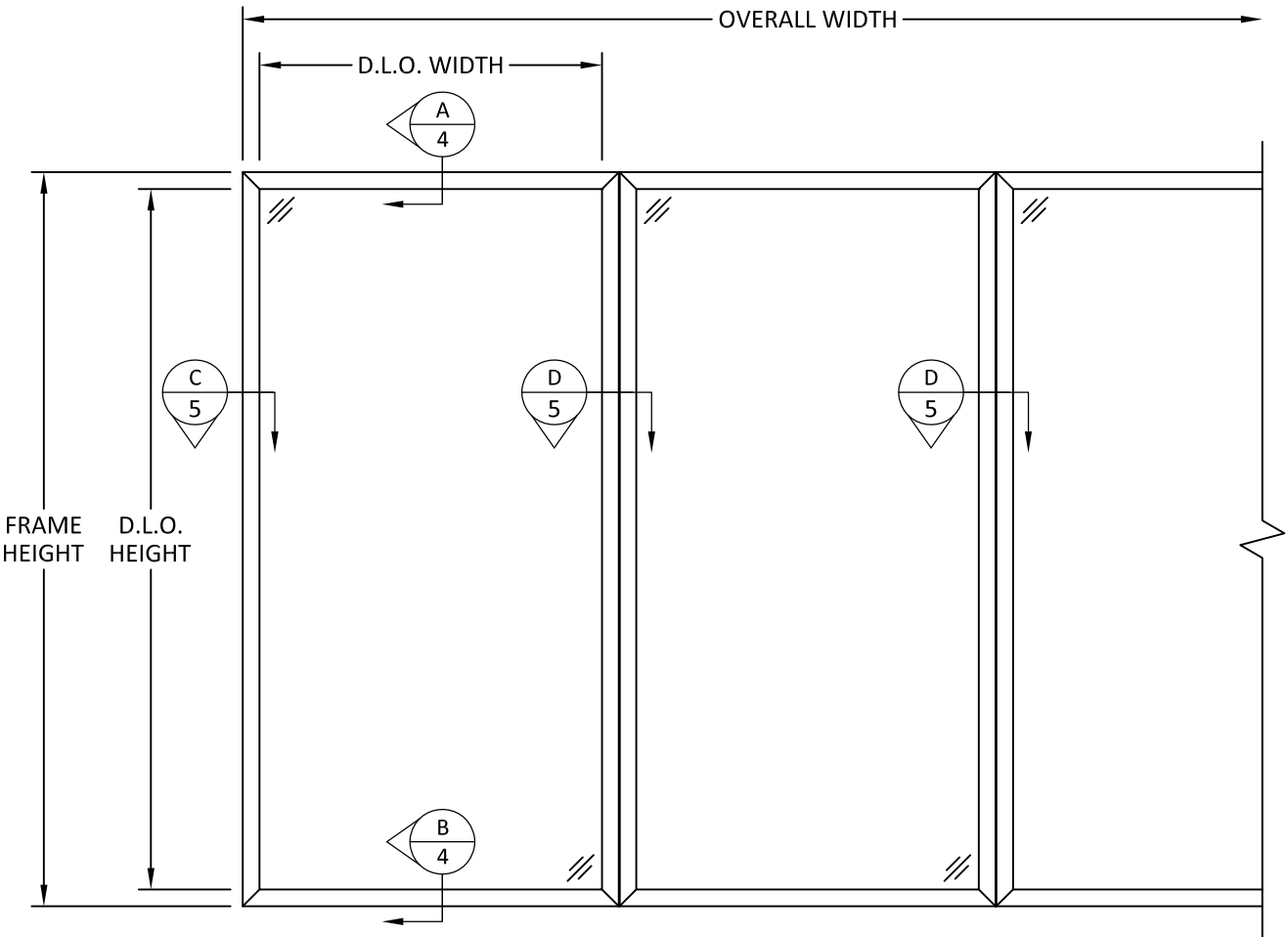
DWG. #:
GIP011

SHEET:
1

OF 9

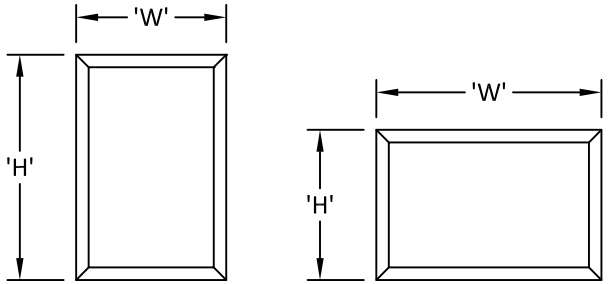


TYPICAL ELEVATION
SINGLE UNIT



TYPICAL ELEVATION
MULLER UNIT

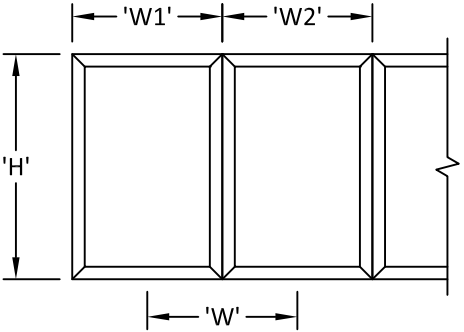
DESIGN PRESSURE TABLE (+/- PSF) - SERIES 6500 ALUMINUM WINDOW WALL SYSTEM													
FRAME HEIGHT 'H' (IN.)	FRAME/TRIBUTARY WIDTH 'W' (IN.)												
	61.5	62	64	66	68	70	72	74	76	78	80	82	84
61.5	140.00	140.00	140.00	140.00	140.00	140.00	140.00	140.00	140.00	140.00	140.00	140.00	140.00
62	140.00	138.76	138.76	138.76	138.76	138.76	138.76	138.76	138.76	138.76	138.76	138.76	138.76
64	140.00	138.76	134.02	134.02	134.02	134.02	134.02	134.02	134.02	134.02	134.02	134.02	134.02
66	140.00	138.76	134.02	129.59	129.59	129.59	129.59	129.59	129.59	129.59	129.59	129.59	129.59
68	140.00	138.76	134.02	129.59	125.44	125.44	125.44	125.44	125.44	125.44	125.44	125.44	125.44
70	140.00	138.76	134.02	129.59	125.44	121.55	121.55	121.55	121.55	121.55	121.55	121.55	121.55
72	140.00	138.76	134.02	129.59	125.44	121.55	117.89	117.89	117.89	117.89	117.89	117.89	117.89
74	140.00	138.76	134.02	129.59	125.44	121.55	117.89	114.45	114.45	114.45	114.45	114.45	114.45
76	140.00	138.76	134.02	129.59	125.44	121.55	117.89	114.45	111.21	111.21	111.21	111.21	111.21
78	140.00	138.76	134.02	129.59	125.44	121.55	117.89	114.45	111.21	108.14	108.14	108.14	108.14
80	140.00	138.76	134.02	129.59	125.44	121.55	117.89	114.45	111.21	108.14	105.23	105.23	105.23
82	140.00	138.76	134.02	129.59	125.44	121.55	117.89	114.45	111.21	108.14	105.23	102.48	102.48
86	140.00	138.76	134.02	129.59	125.44	121.55	117.89	114.45	111.21	108.14	105.23	102.48	99.87
88	140.00	138.76	134.02	129.59	125.44	121.55	117.89	114.45	111.21	108.14	105.23	102.48	-
90	140.00	138.76	134.02	129.59	125.44	121.55	117.89	114.45	111.21	108.14	105.23	-	-
92	140.00	138.76	134.02	129.59	125.44	121.55	117.89	114.45	111.21	108.14	-	-	-
96	140.00	138.76	134.02	129.59	125.44	121.55	117.89	114.45	111.21	-	-	-	-
98	140.00	138.76	134.02	129.59	125.44	121.55	117.89	114.45	-	-	-	-	-
100	140.00	138.76	134.02	129.59	125.44	121.55	117.89	-	-	-	-	-	-
104	140.00	138.76	134.02	129.59	125.44	121.55	-	-	-	-	-	-	-
108	140.00	138.76	134.02	129.59	125.44	-	-	-	-	-	-	-	-
110	140.00	138.76	134.02	129.59	-	-	-	-	-	-	-	-	-
114	140.00	138.76	134.02	-	-	-	-	-	-	-	-	-	-
118	140.00	138.76	-	-	-	-	-	-	-	-	-	-	-
120	140.00	-	-	-	-	-	-	-	-	-	-	-	-



NOTES:
1. FOR SINGLE UNIT, THE WIDTH 'W' AND HEIGHT 'H' ARE INTERCHANGEABLE.

TRIBUTARY WIDTH 'W' = $\frac{W1 + W2}{2}$

D.L.O. WIDTH = FRAME WIDTH - 5.5"
D.L.O. HEIGHT = FRAME HEIGHT - 5.5"



GLOBAL IMPACT
PRODUCTS, LLC

1963 WEST MCNAB RD,
POMPANO BEACH, FL 33069

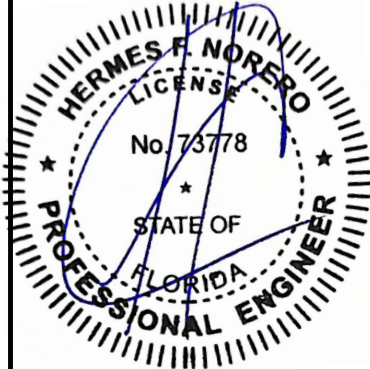
TITLE:
SERIES 7600 ALUMINUM WINDOW
WALL SYSTEM (HVHZ) (IMPACT)
TYPICAL ELEVATIONS &
DESIGN PRESSURE TABLE

PREPARED BY:
BUILDING DROPS, INC.
1900 NE MIAMI COURT, SUITE 2-15
MIAMI, FL 33132
PH: (954)399-8478
FAX: (954)744-4738
WEB: www.buildingdrops.com



REMARKS	BY	DATE

THE INSTALLATION DETAILS DESCRIBED HEREIN ARE GENERIC
AND MAY NOT REFLECT ACTUAL CONDITIONS FOR A SPECIFIC
SITE. IF SITE CONDITIONS CAUSE INSTALLATION TO DEVIATE
FROM THE REQUIREMENTS DETAILED HEREIN, A LICENSED
ENGINEER OR ARCHITECT SHALL PREPARE SITE SPECIFIC
DOCUMENTS FOR USE WITH THIS DOCUMENT.



HERMES F. NORERO, P.E.
FLORIDA P.E. No 73778
BUILDING DROPS, INC.
1900 NE MIAMI COURT, SUITE 2-15
MIAMI, FL 33132
FBPE CERT. OF AUTHORIZATION No. 29578

FL #:
FL46977

DATE: **08.16.2024**

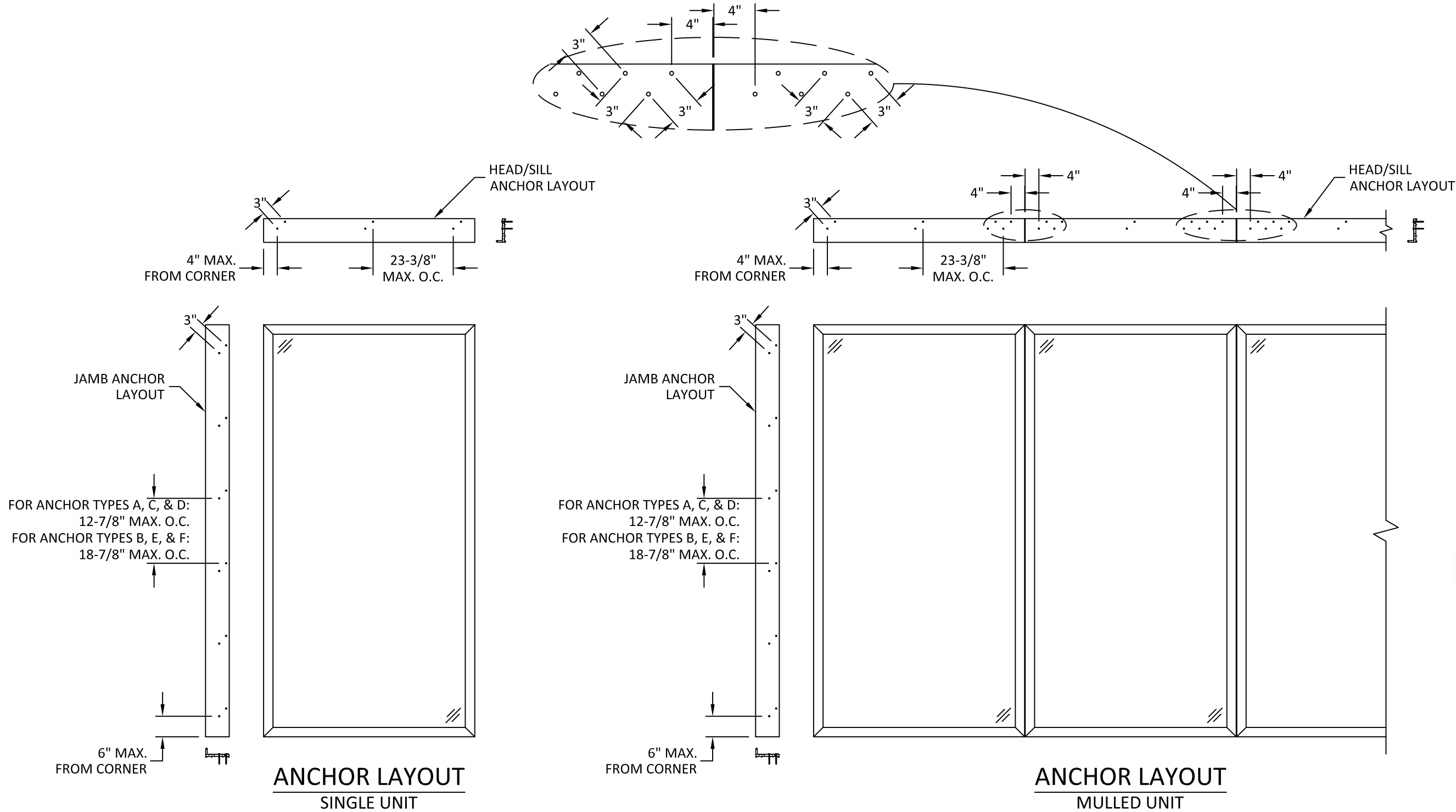
DWG. BY: **MS** CHK. BY: **HFN**

SCALE: **NTS**

DWG. #: **GIP011**

SHEET:
2

c:\users\msun\building drops - common\projects\global industries & mfg., inc.\global impact products\fbc-24-0457 - fbc submittal - series 120_180 aluminum window wall system\dwgs\gip011.dwg 8/26/2024 12:27 PM



SEE SHEETS 6 & 7 FOR ANCHOR TYPES
AND QUANTITY AT END OF MULLION.

GLOBAL IMPACT PRODUCTS, LLC

1963 WEST MCNAB RD,
POMPANO BEACH, FL 33069

TITLE:
SERIES 7600 ALUMINUM WINDOW
WALL SYSTEM (HVHZ) (IMPACT)
ANCHOR LAYOUTS

PREPARED BY:
BUILDING DROPS, INC.
1900 NE MIAMI COURT, SUITE 2-15
MIAMI, FL 33132
PH: (954)399-8478
FAX: (954)744-4738
WEB: www.buildingdrops.com

BUILDING DROPS

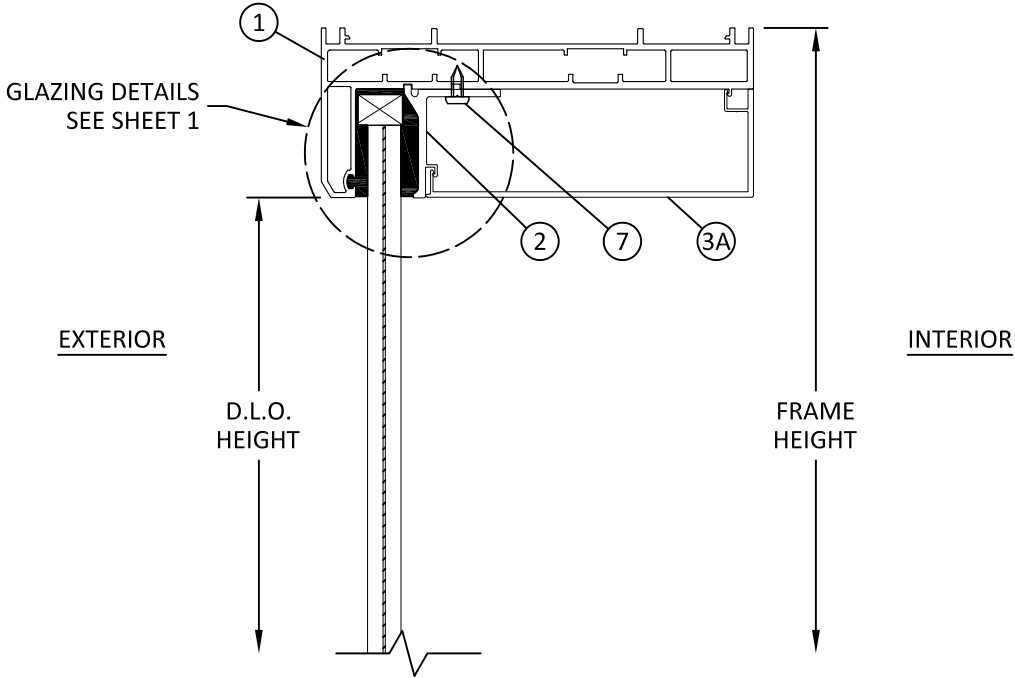
REMARKS	BY	DATE

THE INSTALLATION DETAILS DESCRIBED HEREIN ARE GENERIC
AND MAY NOT REFLECT ACTUAL CONDITIONS FOR A SPECIFIC
SITE. IF SITE CONDITIONS CAUSE INSTALLATION TO DEVIATE
FROM THE REQUIREMENTS DETAILED HEREIN, A LICENSED
ENGINEER OR ARCHITECT SHALL PREPARE SITE SPECIFIC
DOCUMENTS FOR USE WITH THIS DOCUMENT.

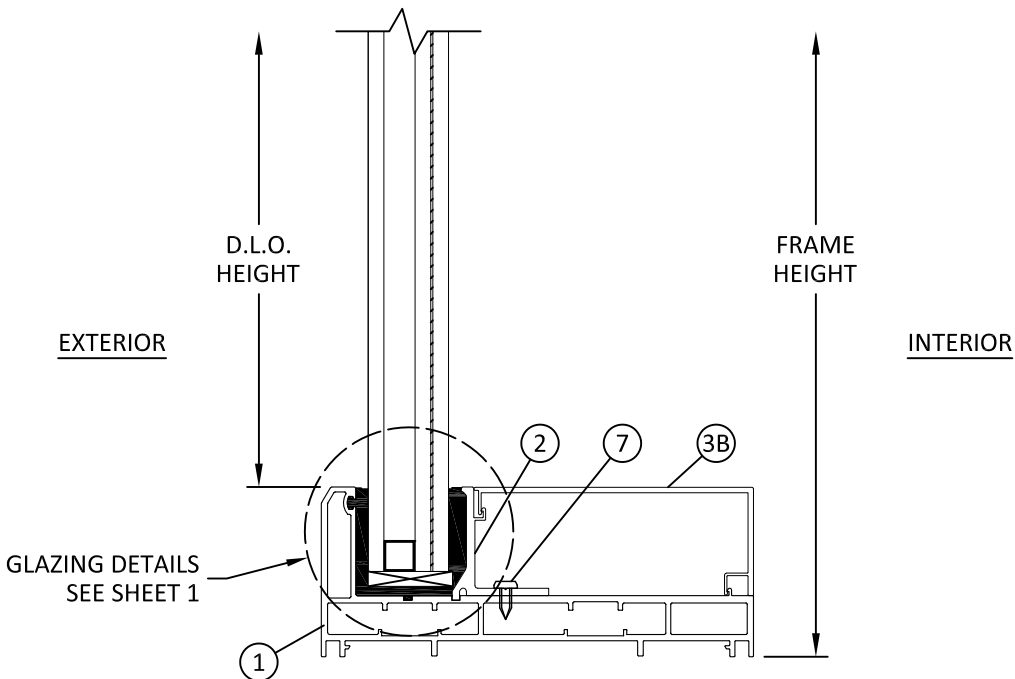
HERMES F. NORERO, P.E.
FLORIDA P.E. No. 73778
BUILDING DROPS, INC.
1900 NE MIAMI COURT, SUITE 2-15
MIAMI, FL 33132
FBPE CERT. OF AUTHORIZATION No. 29578

FL #:	FL46977
DATE:	08.16.2024
DWG. BY:	MS
CHK. BY:	HFN
SCALE:	NTS
DWG. #:	GIP011
SHEET:	3

c:\users\msun\building drops .inc\building drops landing - common\projects\global industries & mfg., inc.\global impact products\fbc-24-0457 - fbc submittal - series 120_180 aluminum window wall system\dwgs\gip011.dwg 8/26/2024 12:27 PM



A
4 VERTICAL SECTION
HEAD
MONOLITHIC GLASS



B
4 VERTICAL SECTION
SILL
INSULATING GLASS

GLOBAL IMPACT
PRODUCTS, LLC

1963 WEST MCNAB RD,
POMPANO BEACH, FL 33069

TITLE:
SERIES 7600 ALUMINUM WINDOW
WALL SYSTEM (HVHZ) (IMPACT)

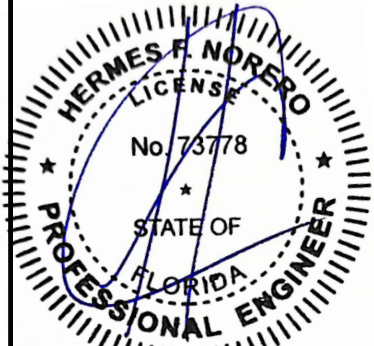
VERTICAL SECTIONS

PREPARED BY:
BUILDING DROPS, INC.
1900 NE MIAMI COURT, SUITE 2-15
MIAMI, FL 33132
PH: (954)399-8478
FAX: (954)744-4738
WEB: www.buildingdrops.com



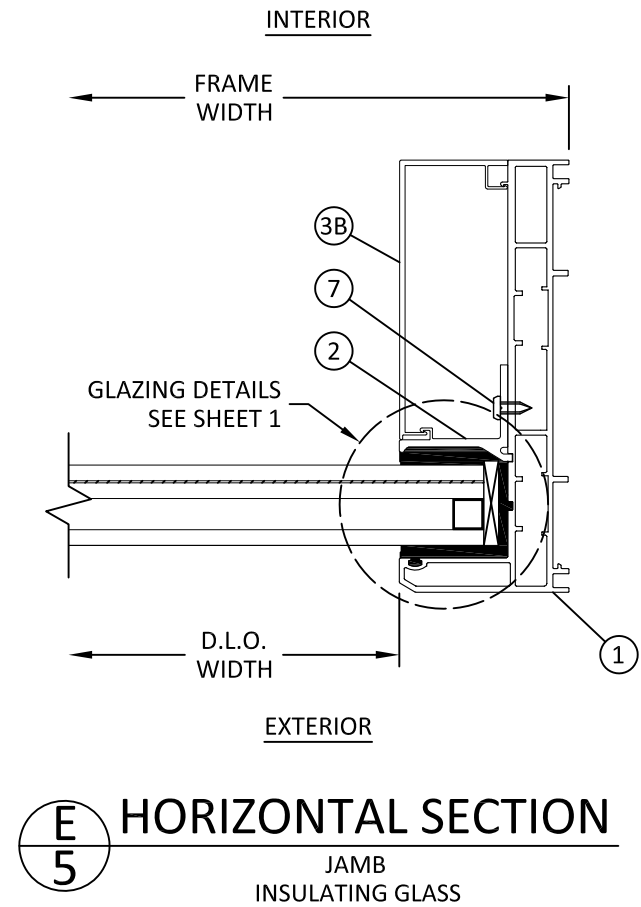
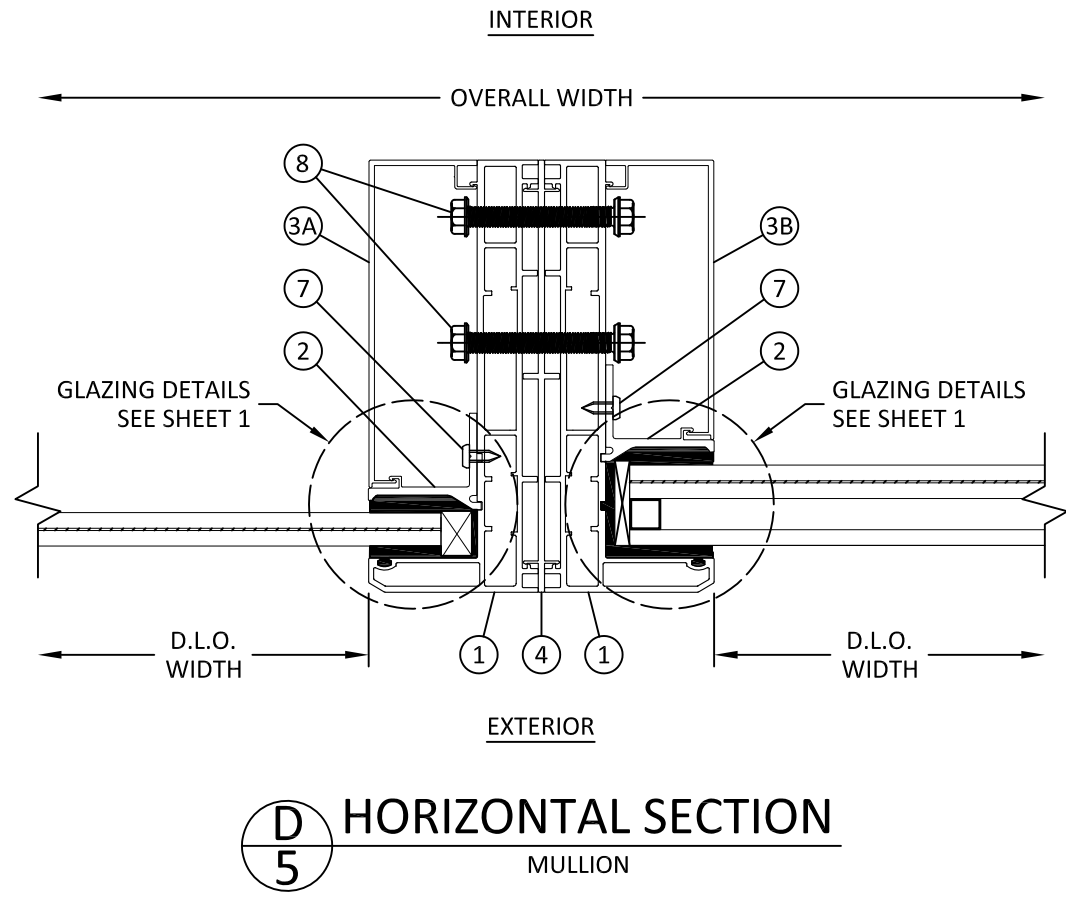
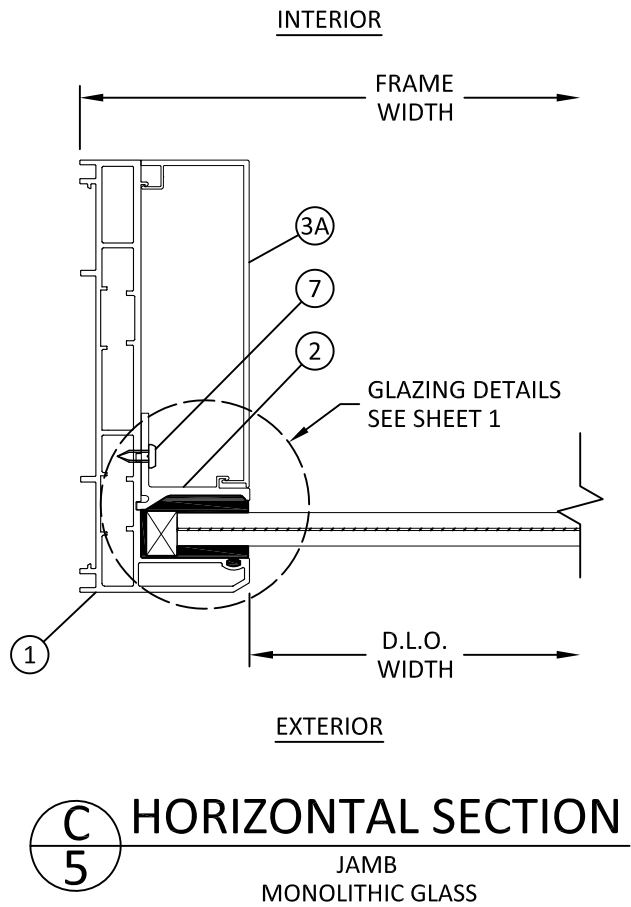
REMARKS	BY	DATE

THE INSTALLATION DETAILS DESCRIBED HEREIN ARE GENERIC AND MAY NOT REFLECT ACTUAL CONDITIONS FOR A SPECIFIC SITE. IF SITE CONDITIONS CAUSE INSTALLATION TO DEVIATE FROM THE REQUIREMENTS DETAILED HEREIN, A LICENSED ENGINEER OR ARCHITECT SHALL PREPARE SITE SPECIFIC DOCUMENTS FOR USE WITH THIS DOCUMENT.



HERMES F. NORERO, P.E.
FLORIDA P.E. No 73778
BUILDING DROPS, INC
1900 NE MIAMI COURT, SUITE 2-15
MIAMI, FL 33132
FBPE CERT. OF AUTHORIZATION No. 29578

FL #:	FL46977
DATE:	08.16.2024
DWG. BY:	CHK. BY:
MS	HFN
SCALE:	NTS
DWG. #:	GIP011
SHEET:	4



GLOBAL IMPACT
PRODUCTS, LLC

1963 WEST MCNAB RD,
POMPANO BEACH, FL 33069

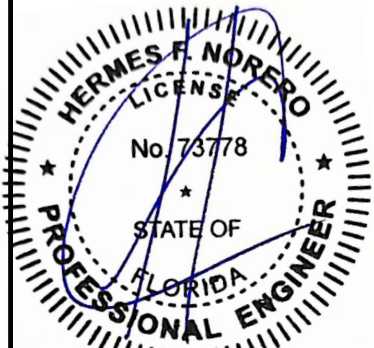
TITLE:
SERIES 7600 ALUMINUM WINDOW
WALL SYSTEM (HVHZ) (IMPACT)
HORIZONTAL SECTIONS

PREPARED BY:
BUILDING DROPS, INC.
1900 NE MIAMI COURT, SUITE 2-15
MIAMI, FL 33132
PH: (954)399-8478
FAX: (954)744-4738
WEB: www.buildingdrops.com



REMARKS	BY	DATE

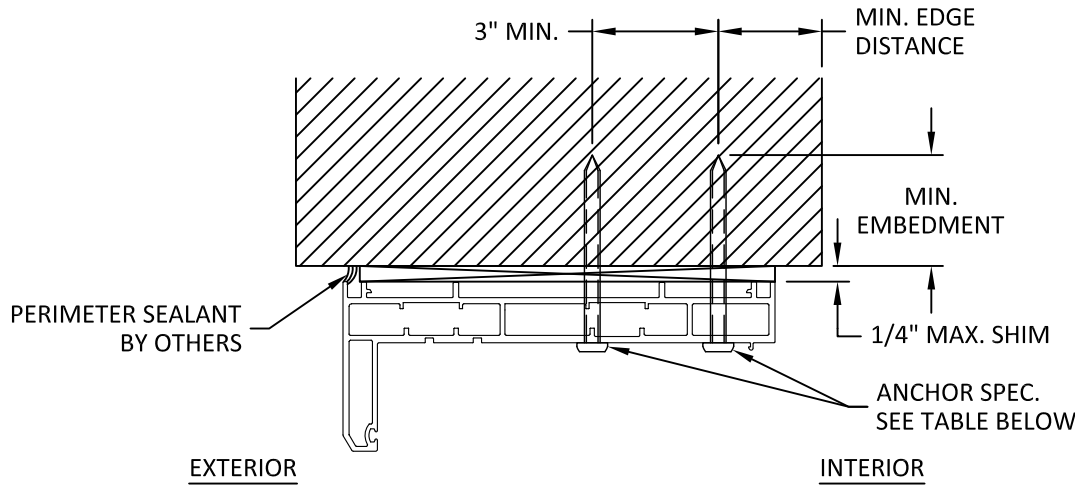
THE INSTALLATION DETAILS DESCRIBED HEREIN ARE GENERIC
AND MAY NOT REFLECT ACTUAL CONDITIONS FOR A SPECIFIC
SITE. IF SITE CONDITIONS CAUSE INSTALLATION TO DEVIATE
FROM THE REQUIREMENTS DETAILED HEREIN, A LICENSED
ENGINEER OR ARCHITECT SHALL PREPARE SITE SPECIFIC
DOCUMENTS FOR USE WITH THIS DOCUMENT.



HERMES F. NORERO, P.E.
FLORIDA P.E. No 73778
BUILDING DROPS, INC.
1900 NE MIAMI COURT, SUITE 2-15
MIAMI, FL 33132
FBPE CERT. OF AUTHORIZATION No. 29578

FL #:	FL46977
DATE:	08.16.2024
DWG. BY:	CHK. BY:
MS	HFN
SCALE:	NTS
DWG. #:	GIP011
SHEET:	5

c:\users\msun\building drops - common\projects\global industries & mfg., inc.\global impact products\fbp-24-0457 - fbp submittal - series 120 - 180 aluminum window wall system\dwgs\gip011.dwg 8/26/2024 12:27 PM



F
6 **INSTALLATION DETAIL**
HEAD SHOWN, JAMB & SILL SIMILAR

INSTALLATION NOTES:

- SEE SHEET 2 FOR REQUIRED QUANTITY OF INSTALLATION ANCHOR AT EACH ANCHOR LOCATION.
- THE NUMBER OF INSTALLATION ANCHORS DEPICTED IS THE MINIMUM NUMBER OF ANCHORS TO BE USED FOR PRODUCT INSTALLATION OF THE MAXIMUM SIZE LISTED.
- INSTALL INDIVIDUAL INSTALLATION ANCHORS WITHIN A TOLERANCE OF $\pm 1/4$ INCH THE DEPICTED LOCATION & SPACING IN THE ANCHOR LAYOUT DETAILS (I.E., WITHOUT CONSIDERATION OF TOLERANCES). TOLERANCES ARE NOT CUMULATIVE FROM ONE INSTALLATION ANCHOR TO THE NEXT.
- SHIM AS REQUIRED AT EACH INSTALLATION ANCHOR WITH LOAD BEARING SHIM(S). MAXIMUM ALLOWABLE SHIM STACK TO BE 1/4 INCH. SHIM WHERE SPACE OF 1/16 INCH OR GREATER OCCURS. SHIM(S) SHALL BE CONSTRUCTED OF HIGH DENSITY PLASTIC OR BETTER.
- FOR MASONRY OR CONCRETE OPENINGS, A 1X WOOD BUCK MAY BE USED (OPTIONAL) AS LONG AS THE MINIMUM EMBEDMENT AND EDGE DISTANCE REQUIREMENTS ARE STILL MET WITHIN THE CORRESPONDING HOST SUBSTRATE. SEE GENERAL NOTE #3 ON SHEET 1 FOR MORE INFORMATION.
- MINIMUM EMBEDMENT AND EDGE DISTANCE EXCLUDE WALL FINISHES, INCLUDING BUT NOT LIMITED TO STUCCO, FOAM, BRICK VENEER, AND SIDING.
- INSTALLATION ANCHORS AND ASSOCIATED HARDWARE MUST BE MADE OF CORROSION RESISTANT MATERIAL OR HAVE A CORROSION RESISTANT COATING.
- FOR HOLLOW BLOCK AND GROUT FILLED BLOCK, DO NOT INSTALL INSTALLATION ANCHORS INTO MORTAR JOINTS. EDGE DISTANCE IS MEASURED FROM FREE EDGE OF BLOCK OR EDGE OF MORTAR JOINT INTO FACE SHELL OF BLOCK.
- INSTALLATION ANCHORS SHALL BE INSTALLED IN ACCORDANCE WITH ANCHOR MANUFACTURER'S INSTALLATION INSTRUCTIONS, AND ANCHORS SHALL NOT BE USED IN SUBSTRATES WITH STRENGTHS LESS THAN THE MINIMUM STRENGTH SPECIFIED BY THE ANCHOR MANUFACTURER.

ANCHOR SCHEDULE				
TYPE	ANCHOR	SUBSTRATE	MIN. EMBEDMENT	MIN. EDGE DISTANCE
A	#14 WOOD SCREW	WOOD, MIN. S.G. = 0.55	1-1/2"	1"
B	1/4" GRADE 5 SELF-DRILLING/ SELF-TAPPING SCREW	STEEL, MIN. 16 GA. THICK, MIN. Fy = 33 KSI, OR ALUMINUM, MIN 1/8" THICK, MIN. 6063-T5 ALLOY	3 THREADS BEYOND METAL	3/4"
C	1/4" ITW TAPCON	UNCRAKED CONCRETE, MIN. F'C = 3000 PSI	1-1/2"	1-5/8"
D	1/4" ITW TAPCON	HOLLOW OR GROUT-FILLED CMU PER ASTM C90, MIN. 2000 PSI	1"	3-1/4"
E	1/4" DEWALT ULTRAACON+	UNCRAKED CONCRETE, MIN. F'C = 3000 PSI	1-3/4"	2-1/2"
F	1/4" DEWALT ULTRAACON+	HOLLOW OR GROUT-FILLED CMU PER ASTM C90, MIN. 2000 PSI	1-3/4"	2-1/2"

GLOBAL IMPACT
PRODUCTS, LLC

1963 WEST MCNAB RD,
POMPANO BEACH, FL 33069

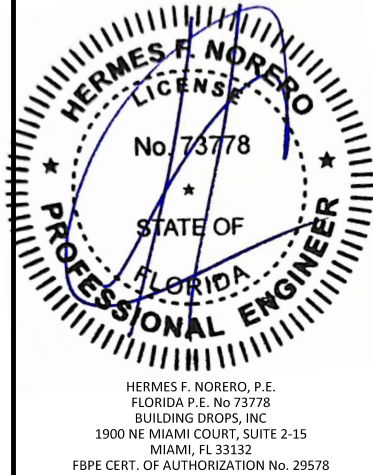
TITLE:
SERIES 7600 ALUMINUM WINDOW
WALL SYSTEM (HVHZ) (IMPACT)
INSTALLATION DETAILS, NOTES &
ANCHOR SCHEDULE

PREPARED BY:
BUILDING DROPS, INC.
1900 NE MIAMI COURT, SUITE 2-15
MIAMI, FL 33132
PH: (954)399-8478
FAX: (954)744-4738
WEB: www.buildingdrops.com



REMARKS	BY	DATE

THE INSTALLATION DETAILS DESCRIBED HEREIN ARE GENERIC AND MAY NOT REFLECT ACTUAL CONDITIONS FOR A SPECIFIC SITE. IF SITE CONDITIONS CAUSE INSTALLATION TO DEVIATE FROM THE REQUIREMENTS DETAILED HEREIN, A LICENSED ENGINEER OR ARCHITECT SHALL PREPARE SITE SPECIFIC DOCUMENTS FOR USE WITH THIS DOCUMENT.



FL #:	FL46977	
DATE:	08.16.2024	
DWG. BY:	MS	CHK. BY: HFN
SCALE:	NTS	
DWG. #:	GIP011	
SHEET:	6	

c:\users\msun\building drops, inc\building drops landing - common\projects\global industries & mfg., inc.\global impact products\fbec-24-0457 - fbec submittal - series 120_180 aluminum window wall system\dwgs\gip011.dwg 8/26/2024 12:27 PM

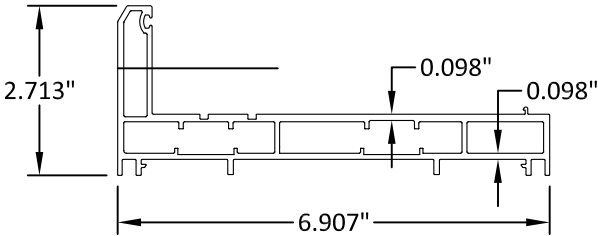
ANCHOR PRESSURE TABLE (+/- PSF)											
TRIBUTARY WIDTH 'W' (in.)	FRAME HEIGHT 'H' (in.)	ANCHOR TYPE*									
		A		B		C & D			E & F		
		8	12	16	8	12	8	12	16	8	12
61.5	72	140.0	140.0	140.0	140.0	140.0	140.0	140.0	140.0	140.0	140.0
66		140.0	140.0	140.0	140.0	140.0	140.0	140.0	140.0	140.0	140.0
72		140.0	140.0	140.0	140.0	140.0	140.0	140.0	140.0	140.0	140.0
78		140.0	140.0	140.0	140.0	140.0	140.0	140.0	140.0	140.0	140.0
84		140.0	140.0	140.0	140.0	140.0	140.0	140.0	140.0	140.0	140.0
90		140.0	140.0	140.0	140.0	140.0	140.0	140.0	140.0	140.0	140.0
96		140.0	140.0	140.0	140.0	140.0	140.0	140.0	140.0	140.0	140.0
102		140.0	140.0	140.0	140.0	140.0	140.0	140.0	140.0	140.0	140.0
108		140.0	140.0	140.0	140.0	140.0	140.0	140.0	140.0	140.0	140.0
114		140.0	140.0	140.0	140.0	140.0	140.0	140.0	140.0	140.0	140.0
120		140.0	140.0	140.0	140.0	140.0	140.0	140.0	140.0	140.0	140.0
61.5	74	140.0	140.0	140.0	140.0	140.0	140.0	140.0	140.0	140.0	140.0
66		140.0	140.0	140.0	140.0	140.0	140.0	140.0	140.0	140.0	140.0
72		140.0	140.0	140.0	140.0	140.0	140.0	140.0	140.0	140.0	140.0
78		140.0	140.0	140.0	140.0	140.0	140.0	140.0	140.0	140.0	140.0
84		140.0	140.0	140.0	140.0	140.0	140.0	140.0	140.0	140.0	140.0
90		140.0	140.0	140.0	140.0	140.0	140.0	140.0	140.0	140.0	140.0
96		140.0	140.0	140.0	140.0	140.0	140.0	140.0	140.0	140.0	140.0
98		140.0	140.0	140.0	140.0	140.0	140.0	140.0	140.0	140.0	140.0
61.5		140.0	140.0	140.0	140.0	140.0	138.6	140.0	140.0	140.0	140.0
66		140.0	140.0	140.0	140.0	140.0	135.9	140.0	140.0	140.0	140.0
72	76	140.0	140.0	140.0	140.0	140.0	133.9	140.0	140.0	140.0	140.0
78		140.0	140.0	140.0	140.0	140.0	133.6	140.0	140.0	140.0	140.0
84		140.0	140.0	140.0	140.0	140.0	133.6	140.0	140.0	140.0	140.0
90		140.0	140.0	140.0	140.0	140.0	133.6	140.0	140.0	140.0	140.0
96		140.0	140.0	140.0	140.0	140.0	133.6	140.0	140.0	140.0	140.0
61.5	78	140.0	140.0	140.0	140.0	140.0	132.7	140.0	140.0	140.0	140.0
66		137.3	140.0	140.0	140.0	140.0	129.9	140.0	140.0	140.0	140.0
72		134.9	140.0	140.0	140.0	140.0	127.6	140.0	140.0	140.0	140.0
78		134.1	140.0	140.0	140.0	140.0	126.8	140.0	140.0	140.0	140.0
84		134.1	140.0	140.0	140.0	140.0	126.8	140.0	140.0	140.0	140.0
90		134.1	140.0	140.0	140.0	140.0	126.8	140.0	140.0	140.0	140.0
92		134.1	140.0	140.0	140.0	140.0	126.8	140.0	140.0	140.0	140.0
61.5	80	134.7	140.0	140.0	140.0	140.0	127.4	140.0	140.0	140.0	140.0
66		131.5	140.0	140.0	140.0	140.0	124.4	140.0	140.0	140.0	140.0
72		128.7	140.0	140.0	140.0	140.0	121.8	140.0	140.0	140.0	140.0
78		127.5	140.0	140.0	140.0	140.0	120.6	140.0	140.0	140.0	140.0
84		127.5	140.0	140.0	140.0	140.0	120.5	140.0	140.0	140.0	140.0
61.5	82	127.5	140.0	140.0	140.0	140.0	120.5	140.0	140.0	140.0	140.0
66		129.4	140.0	140.0	140.0	140.0	122.4	140.0	140.0	140.0	140.0
72		126.1	140.0	140.0	140.0	140.0	119.3	140.0	140.0	140.0	140.0
78		123.1	140.0	140.0	140.0	140.0	116.5	140.0	140.0	140.0	140.0
84		121.6	140.0	140.0	140.0	140.0	115.0	140.0	140.0	140.0	140.0
88		121.3	140.0	140.0	140.0	140.0	114.7	140.0	140.0	140.0	140.0
88		121.3	140.0	140.0	140.0	140.0	114.7	140.0	140.0	140.0	140.0
61.5	84	124.5	140.0	140.0	140.0	140.0	117.8	140.0	140.0	140.0	140.0
66		121.2	140.0	140.0	140.0	140.0	114.6	140.0	140.0	140.0	140.0
72		118.0	140.0	140.0	140.0	140.0	111.6	140.0	140.0	140.0	140.0
78		116.2	140.0	140.0	140.0	140.0	109.9	140.0	140.0	140.0	140.0
84		115.6	140.0	140.0	140.0	140.0	109.3	140.0	140.0	140.0	140.0
86		115.6	140.0	140.0	140.0	140.0	109.3	140.0	140.0	140.0	140.0
61.5		120.0	140.0	140.0	140.0	140.0	113.5	140.0	140.0	140.0	140.0
66	86	116.6	140.0	140.0	140.0	140.0	110.3	140.0	140.0	140.0	140.0
72		113.3	140.0	140.0	140.0	140.0	107.2	140.0	140.0	140.0	140.0
78		111.3	140.0	140.0	140.0	140.0	105.2	140.0	140.0	140.0	140.0
84		110.4	140.0	140.0	140.0	140.0	104.4	140.0	140.0	140.0	140.0
84		110.4	140.0	140.0	140.0	140.0	104.4	140.0	140.0	140.0	140.0

ANCHOR PRESSURE TABLE (+/- PSF)											
TRIBUTARY WIDTH 'W' (in.)	FRAME HEIGHT 'H' (in.)	ANCHOR TYPE*									
		A		B		C & D			E & F		
		8	12	16	8	12	8	12	16	8	12
61.5	88	115.8	140.0	140.0	140.0	140.0	109.6	140.0	140.0	140.0	140.0
66		112.4	140.0	140.0	140.0	140.0	106.3	140.0	140.0	140.0	140.0
72		108.9	140.0	140.0	140.0	140.0	103.0	140.0	140.0	140.0	140.0
78		106.7	140.0	140.0	137.5	140.0	100.9	140.0	140.0	140.0	140.0
82		105.8	140.0	140.0	136.4	140.0	100.1	140.0	140.0	140.0	140.0
61.5	90	111.9	140.0	140.0	140.0	140.0	105.9	140.0	140.0	140.0	140.0
66		108.4	140.0	140.0	139.7	140.0	102.5	140.0	140.0	140.0	140.0
72		104.9	140.0	140.0	135.2	140.0	99.2	140.0	140.0	140.0	140.0
78		102.5	140.0	140.0	132.1	140.0	97.0	140.0	140.0	140.0	140.0
80		102.0	140.0	140.0	131.4	140.0	96.4	140.0	140.0	140.0	140.0
61.5	92	108.3	140.0	140.0	139.5	140.0	102.4	140.0	140.0	140.0	140.0
66		104.7	140.0	140.0	135.0	140.0	99.1	140.0	140.0	140.0	140.0
72		101.2	140.0	140.0	130.3	140.0	95.7	140.0	140.0	140.0	140.0
78		98.7	140.0	140.0	127.1	140.0	93.3	140.0	140.0	140.0	140.0
61.5	94	104.9	140.0	140.0	135.1	140.0	99.2	140.0	140.0	140.0	140.0
66		101.3	140.0	140.0	130.5	140.0	95.8	140.0	140.0	140.0	140.0
72		97.7	140.0	140.0	125.8	140.0	92.4	138.6	140.0	140.0	140.0
76		95.8	140.0	140.0	123.5	140.0	90.6	136.0	140.0	140.0	140.0
61.5	96	101.6	140.0	140.0	131.0	140.0	96.1	140.0	140.0	140.0	140.0
66		98.1	140.0	140.0	126.4	140.0	92.8	139.2	140.0	140.0	140.0
72		94.4	140.0	140.0	121.7	140.0	89.3	133.9	140.0	140.0	140.0
76		92.5	138.8	140.0	119.2	140.0	87.5	131.3	140.0	140.0	140.0
61.5	98	98.6	140.0	140.0	127.1	140.0	93.3	139.9	140.0	140.0	140.0
66		95.1	140.0	140.0	122.5	140.0	89.9	134.9	140.0	140.0	140.0
72		91.4	137.1	140.0	117.7	140.0	86.4	129.6	140.0	140.0	140.0
74		90.4	135.5	140.0	116.4	140.0	85.5	128.2	140.0	140.0	140.0
61.5	100	95.8	140.0	140.0	123.4	140.0	90.6	135.9	140.0	140.0	140.0
66		92.2	138.4	140.0	118.8	140.0	87.2	130.9	140.0	140.0	140.0
72		88.5	132.8	140.0	114.1	140.0	83.7	125.6	140.0	140.0	140.0
61.5	102	93.1	139.6	140.0	119.9	140.0	88.0	132.0	140.0	140.0	140.0
66		89.6	134.3	140.0	115.4	140.0	84.7	127.1	140.0	140.0	140.0
70		87.0	130.4	140.0	112.1	140.0	82.2	123.4	140.0	140.0	140.0
61.5	104	90.5	135.8	140.0	116.7	140.0	85.6	128.4	140.0	140.0	140.0
66		87.0	130.6	140.0	112.2	140.0	82.3	123.5	140.0	140.0	140.0
70		84.4	126.7	140.0	108.8	140.0	79.9	119.8	140.0	138.3	140.0
61.5	106	88.1	132.2	140.0	113.6	140.0	83.4	125.0	140.0	140.0	1

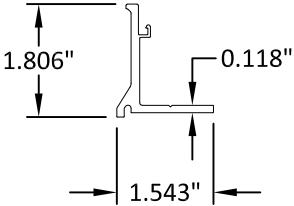
c:\users\msun\building_drops_inc\building_drops_landing - common\projects\global_industries & mfg., inc.\global_impact_products\fbc-24-0457 - fbc submittal - series 120_180_aluminum_window_wall_system\dwgs\gip011.dwg

8/26/2024 12:27 PM

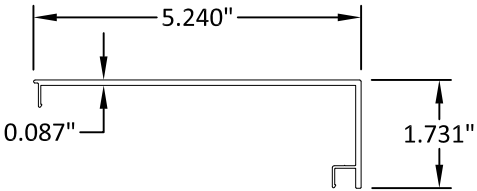
BILL OF MATERIALS		
ITEM	DESCRIPTION	MATERIAL
1	FRAME HEAD/JAMB/SILL	ALUMINUM 6063-T6
2	GLASS STOP	ALUMINUM 6063-T5
3A	FRAME COVER (MONOLITHIC GLASS)	ALUMINUM 6063-T5
3B	FRAME COVER (INSULATING GLASS)	ALUMINUM 6063-T5
4	MULLION	ALUMINUM 6063-T6
5	CORNER KEY	-
6	SETTING BLOCK	EPDM, DUROMETER 80±5 SHORE A
7	#10 X 1/2" PH SDS, 6" FROM ENDS, 21-1/4" O.C.	STAINLESS STEEL
8	1/4"-20 X 2-1/2" HEX HEAD BOLT W/ NUTS AND WASHER, 6" FROM ENDS, 21-1/4" O.C.	STEEL



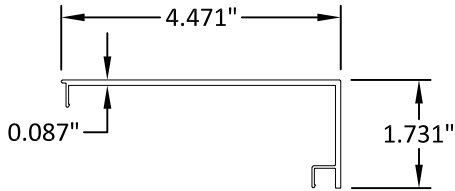
1 FRAME HEAD/JAMB/SILL



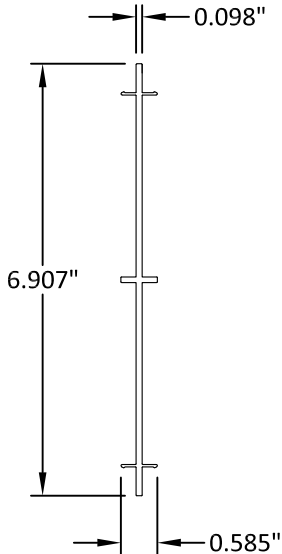
2 GLASS STOP



3A FRAME COVER (MONO.)



3B FRAME COVER (INSUL.)



4 MULLION

GLOBAL IMPACT
PRODUCTS, LLC

1963 WEST MCNAB RD,
POMPANO BEACH, FL 33069

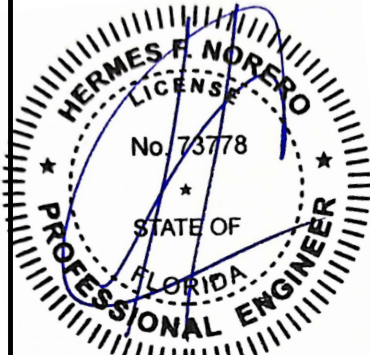
TITLE:
SERIES 7600 ALUMINUM WINDOW
WALL SYSTEM (HVHZ) (IMPACT)
BILL OF MATERIALS & COMPONENTS

PREPARED BY:
BUILDING DROPS, INC.
1900 NE MIAMI COURT, SUITE 2-15
MIAMI, FL 33132
PH: (954)399-8478
FAX: (954)744-4738
WEB: www.buildingdrops.com


BUILDING DROPS

REMARKS	BY	DATE

THE INSTALLATION DETAILS DESCRIBED HEREIN ARE GENERIC AND MAY NOT REFLECT ACTUAL CONDITIONS FOR A SPECIFIC SITE. IF SITE CONDITIONS CAUSE INSTALLATION TO DEVIATE FROM THE REQUIREMENTS DETAILED HEREIN, A LICENSED ENGINEER OR ARCHITECT SHALL PREPARE SITE SPECIFIC DOCUMENTS FOR USE WITH THIS DOCUMENT.

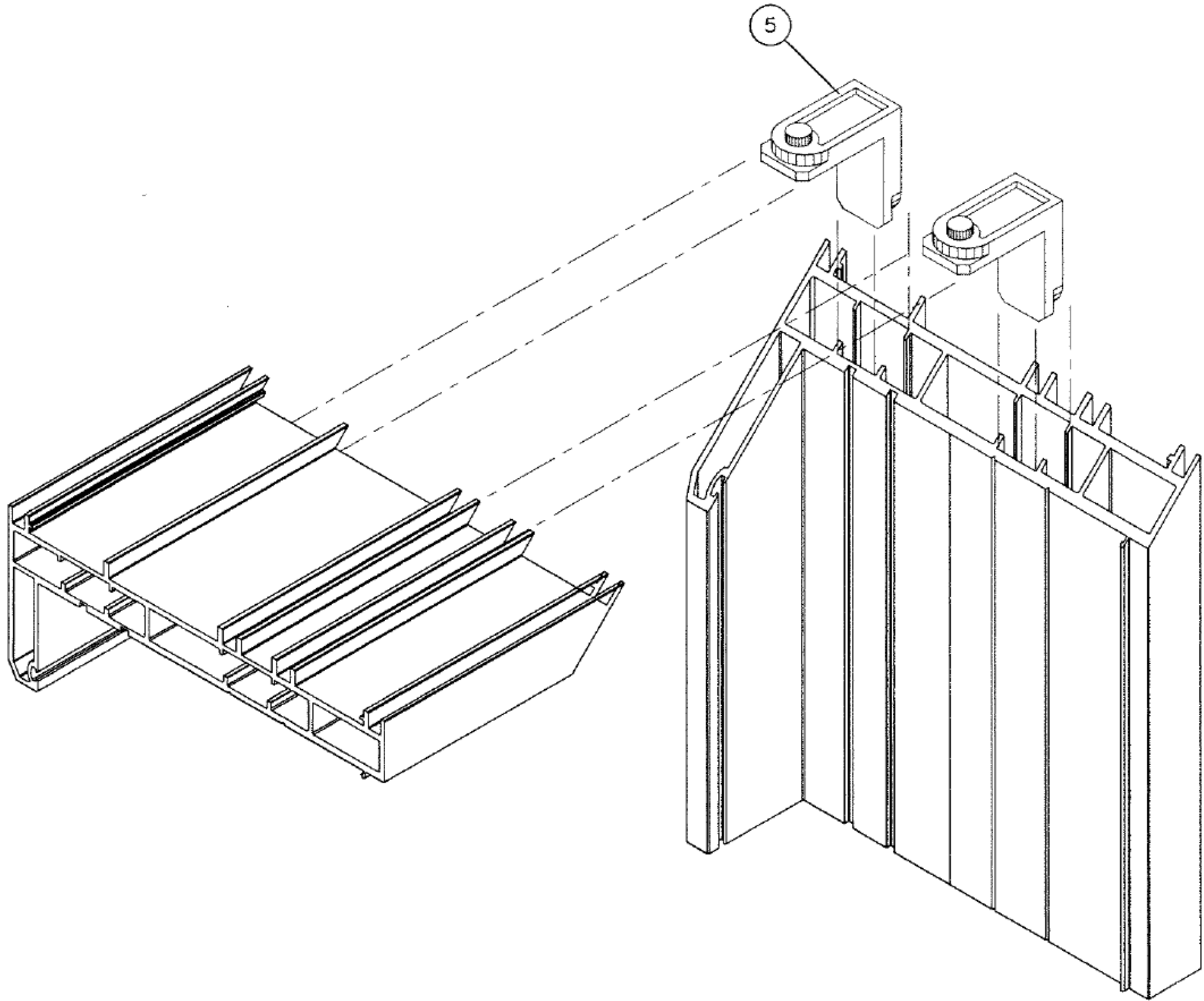


HERMES F. NORERO, P.E.
FLORIDA P.E. No 73778
BUILDING DROPS, INC.
1900 NE MIAMI COURT, SUITE 2-15
MIAMI, FL 33132
FBPE CERT. OF AUTHORIZATION No. 29578

FL #:	FL46977
DATE:	08.16.2024
DWG. BY:	CHK. BY:
MS	HFN
SCALE:	NTS
DWG. #:	GIP011

SHEET:


OF 9



FRAME CORNER DETAIL

GLOBAL IMPACT
PRODUCTS, LLC

1963 WEST MCNAB RD,
POMPANO BEACH, FL 33069

TITLE:
SERIES 7600 ALUMINUM WINDOW
WALL SYSTEM (HVHZ) (IMPACT)

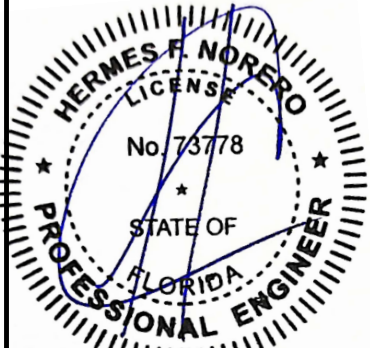
CORNER DETAILS

PREPARED BY:

BUILDING DROPS, INC.
1900 NE MIAMI COURT, SUITE 2-15
MIAMI, FL 33132
PH: (954)399-8478
FAX: (954)744-4738
WEB: www.buildingdrops.com

REMARKS	BY	DATE

THE INSTALLATION DETAILS DESCRIBED HEREIN ARE GENERIC
AND MAY NOT REFLECT ACTUAL CONDITIONS FOR A SPECIFIC
SITE. IF SITE CONDITIONS CAUSE INSTALLATION TO DEVIATE
FROM THE REQUIREMENTS DETAILED HEREIN, A LICENSED
ENGINEER OR ARCHITECT SHALL PREPARE SITE SPECIFIC
DOCUMENTS FOR USE WITH THIS DOCUMENT.



HERMES F. NORERO, P.E.
FLORIDA P.E. No 73778
BUILDING DROPS, INC.
1900 NE MIAMI COURT, SUITE 2-15
MIAMI, FL 33132
FBPE CERT. OF AUTHORIZATION No. 29578

FL #:	FL46977
DATE:	08.16.2024
DWG. BY:	CHK. BY:
MS	HFN
SCALE:	NTS
DWG. #:	GIP011

SHEET:
