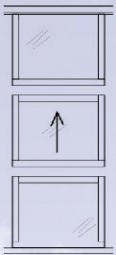


7000 Series

Single Hung - Window Wall



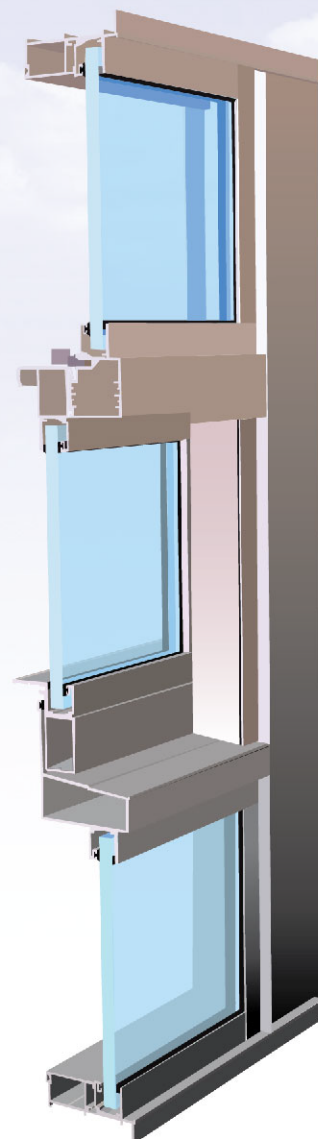
Window Wall	Series	Description
 FL 40318 R1	WW 7040	Large Missile Insulated Impact for Residential, Multi-Story Buildings
	WW 7041	Large Missile Impact for Residential, Multi-Story and Lite Commercial Buildings
	WW 7062	Large Missile Impact for Residential, Multi-Story and Commercial Buildings
	WW 7040	Large Missile Impact for Residential, Multi-Story and Commercial Buildings
	WW 7041	Large Missile Impact for Residential, Multi-Story and Lite Commercial Buildings
	WW 7062	Large Missile Impact for Residential, Multi-Story and Lite Commercial Buildings
	WW 7072	Small Missile Impact for Residential, Multi-Story and Commercial Buildings

All Products are Florida Building Code Product Control Approved

7000 Series Single Hung Window Wall Features & Benefits

- Small and Large Missile Impact resistant single hung window with integral fixed lite for use on multi-story, residential and high-rise commercial areas requiring design pressures less than +90 psf and -160 psf.
- Continuous frame reduces installation labor costs by reducing number of units to be installed from 2 windows and horizontal mull to one window.
- Continuous frame reduces possibility of water intrusion by eliminating exterior joint between fixed window, mull and single hung window. Installation labor is further reduced by eliminating need to install horizontal mull clips and back bedding seals at fixed lite to single hung joint.
- Tested and approved in accordance with Metro Dade and Florida Building Code, High Velocity Hurricane Zone area (HVHZ) TAS 201-94, TAS 202-94, TAS 203-94, Qualifying : ANSI Z-97, AAMA 1302.5.
- Maximum test size 48" x 120".
- Tested to 6.24 pounds of Air Infiltration.
- Tested to 15 pounds of Water Resistance.
- Heavy duty 3 1/8" deep aluminum frame assembled at each corner with three stainless steel fasteners.
- Stock colors available in White or Bronze Powder Coat. Custom colors and finishes available in unit by unit order.
- Glass color clear. Custom colors available upon request.
- Vent frame has telescopic joints for additional strength and is assembled with two stainless steel fasteners at each joint.
- Sloped head and sill for positive water drainage.
- Top vent rail has two pre-finished metal sweep locks that lock into an integral extruded keeper in meeting rail.
- Wall thicknesses vary from 0.062" through 0.093" at critical areas eliminating need for steel reinforcement to meet loads.
- Vent sides weather-stripped with two rows of high-performance wool pile with an integral 0.170" high finish seal to provide high performance air and water intrusion resistance.
- Foam filled bulb vinyl at sill and vent bottom rail connection provides uniform water barrier.

SECTION DETAILS



**GLOBAL
IMPACT
PRODUCTS**
MANUFACTURER WINDOWS & DOORS