

C-8000 Series

Curtain Wall



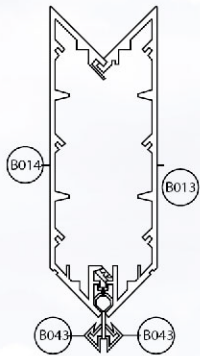
BECAUSE SAFETY IS PRICELESS

 **GLOBAL
IMPACT
PRODUCTS**
MANUFACTURER WINDOWS & DOORS

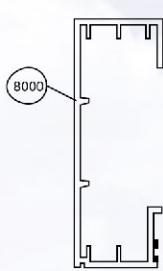
C-8000 Series Curtain Wall System

- Small and Large Missile Impact, Commercial Buildings Requiring Design Pressures -100 and +120 PSF.
- Up to 18 ft free standing design.
- Tested and approved in accordance with Metro Dade and Florida Building Code, High Velocity Hurricane Zone area (HVHZ) TAS 201-94, TAS 202-94, TAS 203-94, Qualifying: ANSI Z-97, AAMA 1302.5.
- Maximum test size 78" x 198" in multiple configurations.
- Tested to 6.24 lbs. of air infiltration.
- Tested to 15 lbs. of water resistance.
- Heavy duty 6.5" deep aluminum frame.
- Stock colors available in White or Bronze Powder Coat. Custom colors and finishes available upon request.
- Standard glass color clear. Custom colors available upon request.

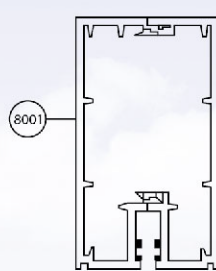
Corner



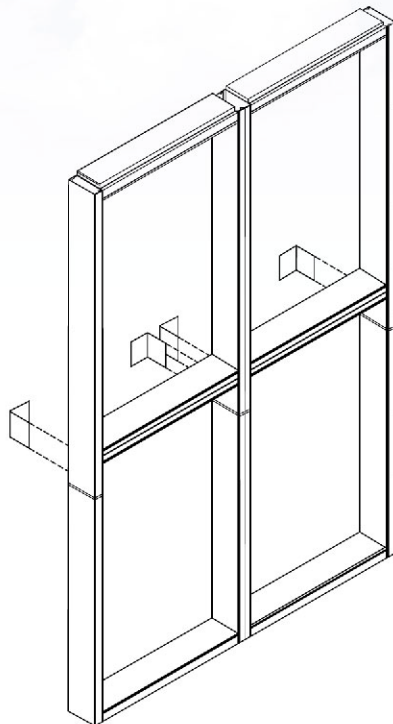
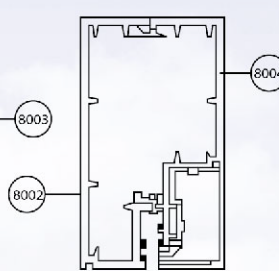
Type A



Type B

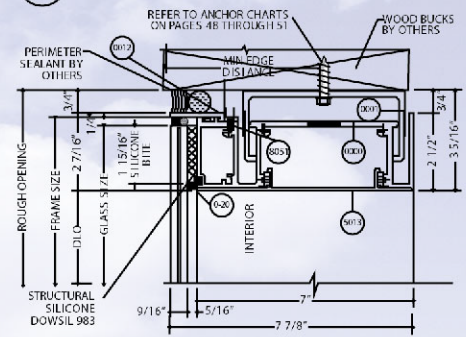


Type C

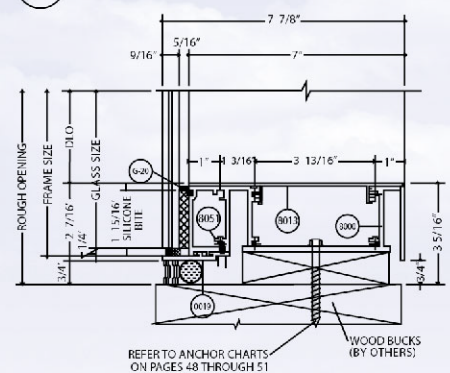


SECTION DETAILS

1.2 HEAD DETAIL (WOOD)



2.2 SILL DETAIL (WOOD)



**GLOBAL
IMPACT
PRODUCTS**

MANUFACTURER WINDOWS & DOORS